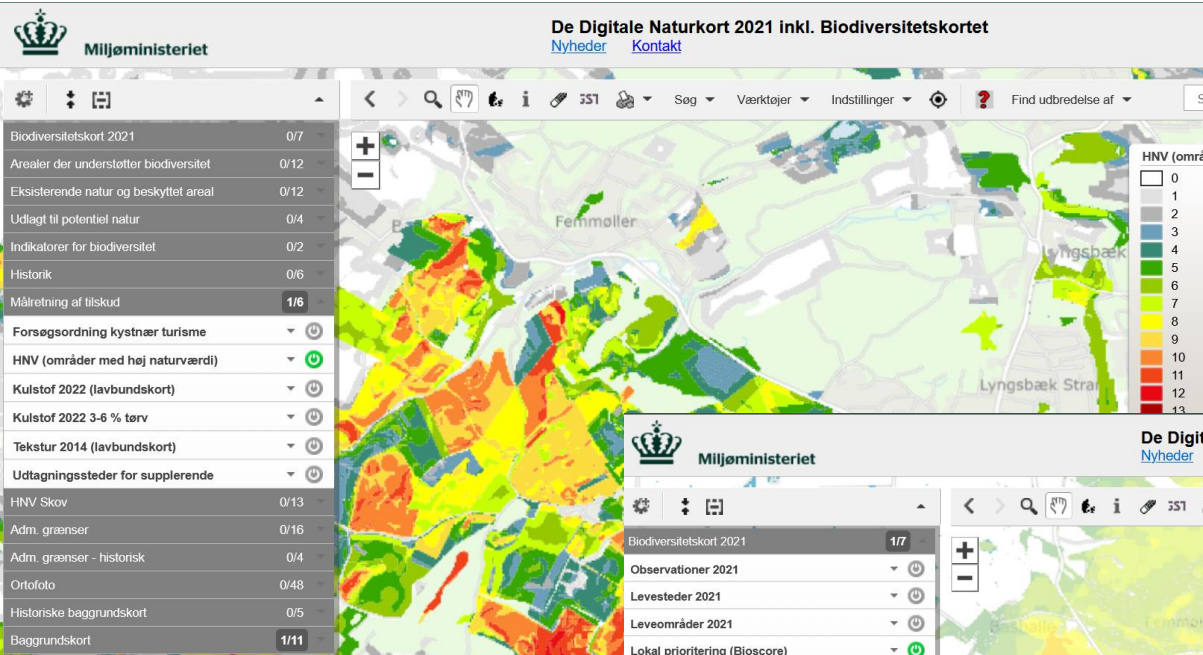


DANSK NATURINDIKATOR



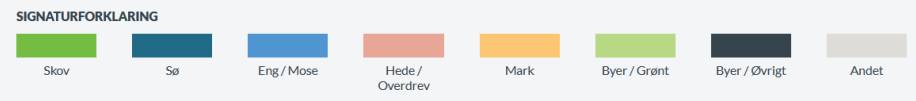
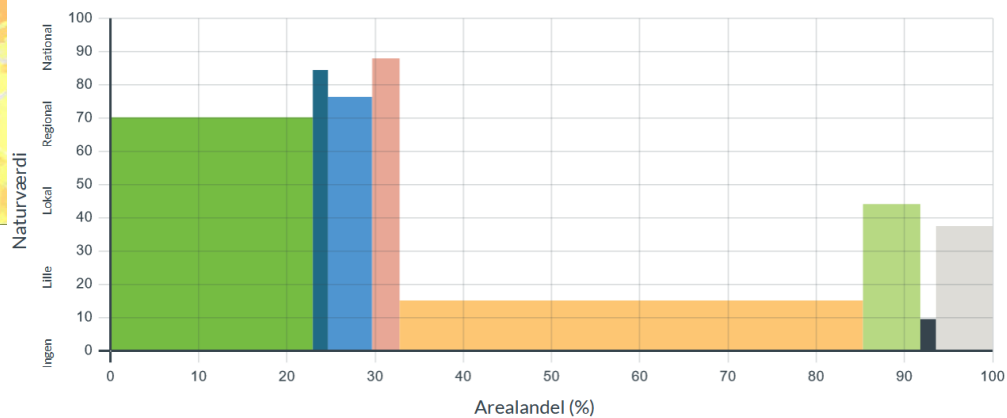
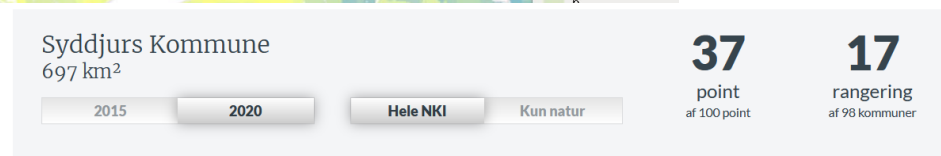
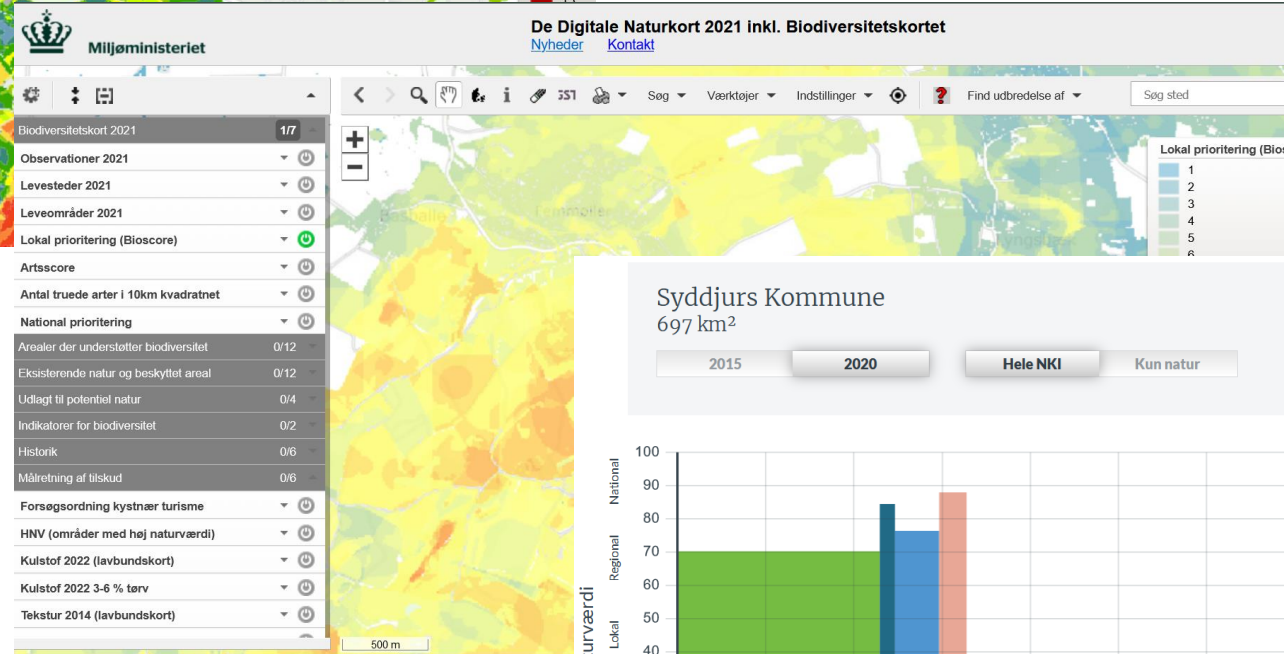


HNV-kortet til målretning af naturpleje (2012)



Biodiversitetskortet Kommunernes Grønne Danmarkskort (2014-2021)

Kommunernes naturkapitalindeks (2016, 2021)

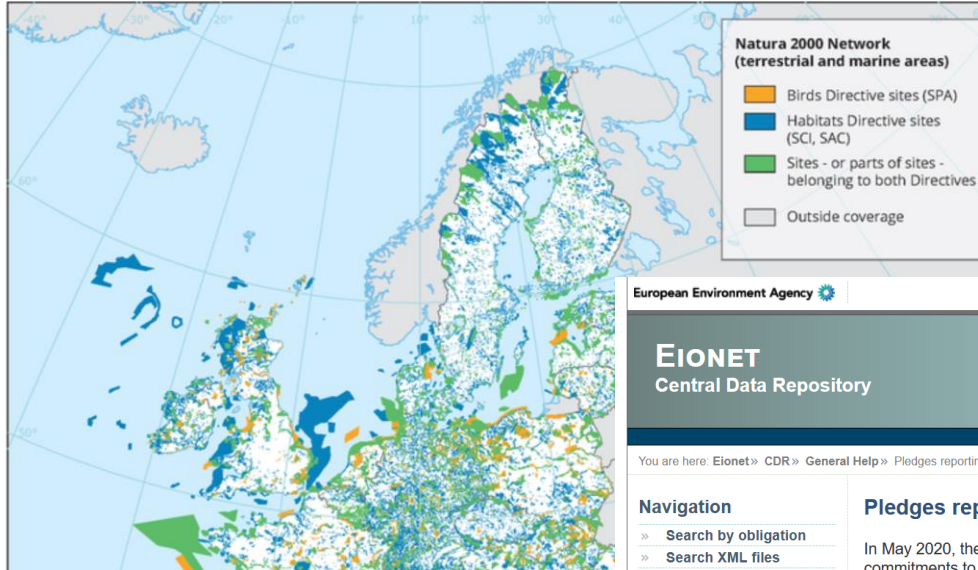


Kommunerangering

RANGERING

- 1 Fanø
- 2 Læsø
- 3 Tårnby
- 4 Lyngby-Taarbæk
- 5 Furesø
- 6 Rudersdal
- 7 Halsnæs
- 8 Gribskov
- 9 Hillerød
- 10 Helsingør
- 11 Dragør
- 12 Thisted
- 13 Silkeborg
- 14 Allerød
- 15 Fredensborg
- 16 Frederikshavn
- 17 Syddjurs
- 18 Hørsholm

Hent indeks



Udpegning – Natura 2000 – Fuglebeskyttelses- og Habitatdirektivet



European Environment Agency

EIONET
Central Data Repository

You are here: Eionet » CDR » General Help » Pledges reporting for protected areas and 30% conservation status improvement targets

Navigation

- » Search by obligation
- » Search XML files
- » Search for feedback
- » Global worklist
- » Notifications
- » Help

Account Services

I have

- » lost my password

Pledges reporting for protected areas and 30% conservation status improvement targets

In May 2020, the European Commission adopted a new EU Biodiversity Strategy setting out a comprehensive package of actions and commitments to redouble Europe's efforts to protect and restore biodiversity by 2030. In this context, the strategy calls on Member States to

- protecting at least 30% of the EU's land area and 30% of its seas for nature by 2030. At least one third of this (10% of land and 10% of sea) should be strictly protected.
- ensure that, by 2030, there is no further deterioration in conservation trends and status of habitats and species protected by the EU Nature Directives. In addition, Member States r category or show a strong positive trend.

The Member States will report their pledge: [\(conservation status improvements\)](#). This p material for the reporting.

1) Pledges reporting for protect

Guidance documents and reportin

- » [Criteria and guidance for protected a](#)
- » [Guidelines for reporting pledges on t](#)
- » [Technical guidance for submitting ple](#)

20 % beskyttet
10 % strengt beskyttet

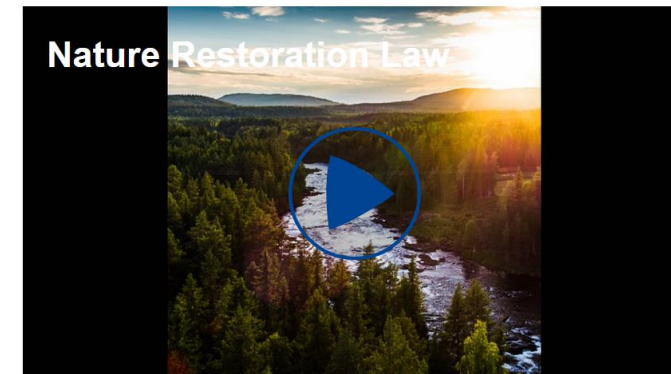
Nature Restoration Law

Supporting the restoration of ecosystems for people, the climate and the planet

The [Nature Restoration Law](#) is the first continent-wide, comprehensive law of its kind. It is a key element of the [EU Biodiversity Strategy](#), which sets binding targets to restore degraded ecosystems, in particular those with the most potential to capture and store carbon and to prevent and reduce the impact of natural disasters.

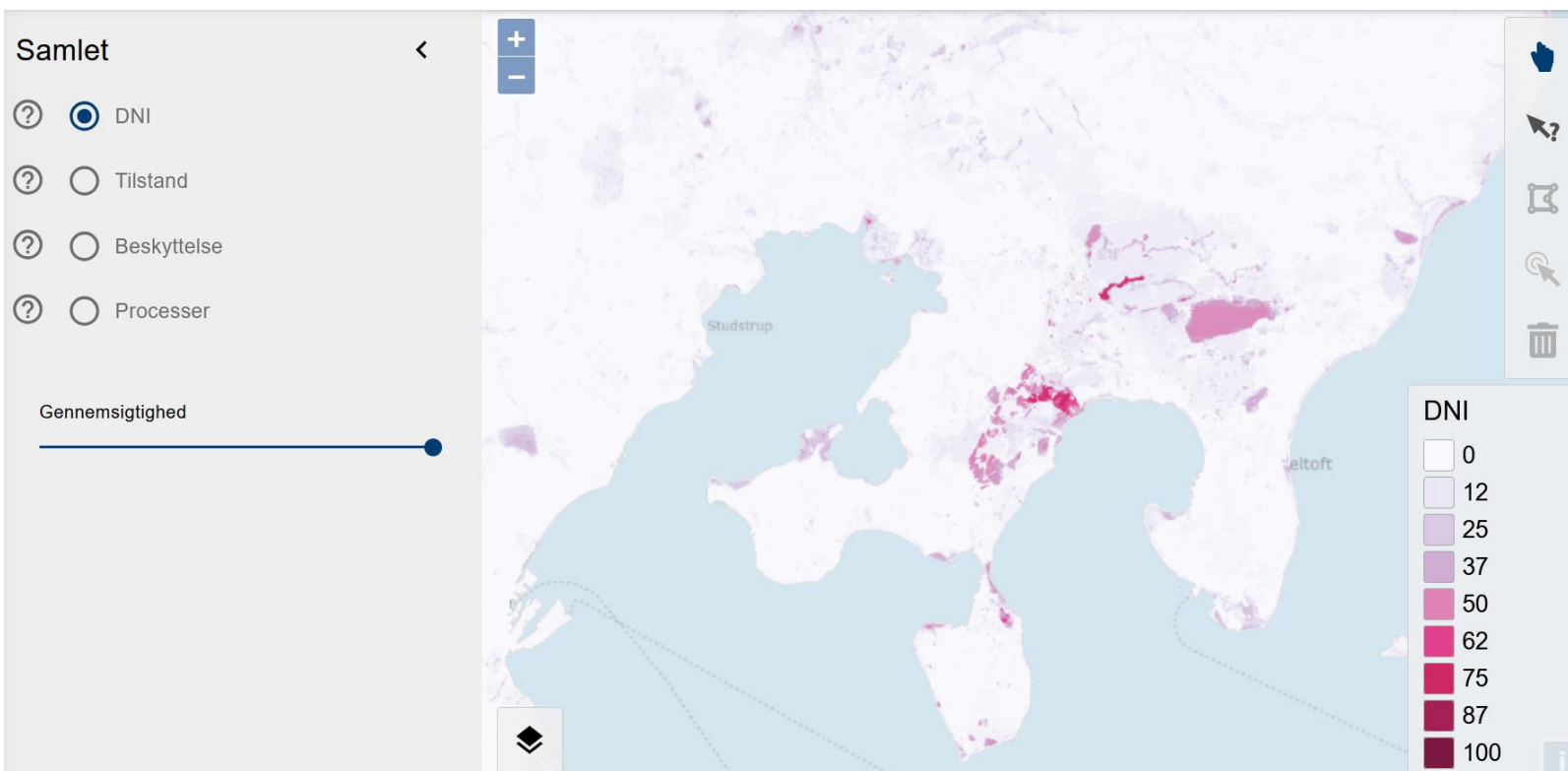
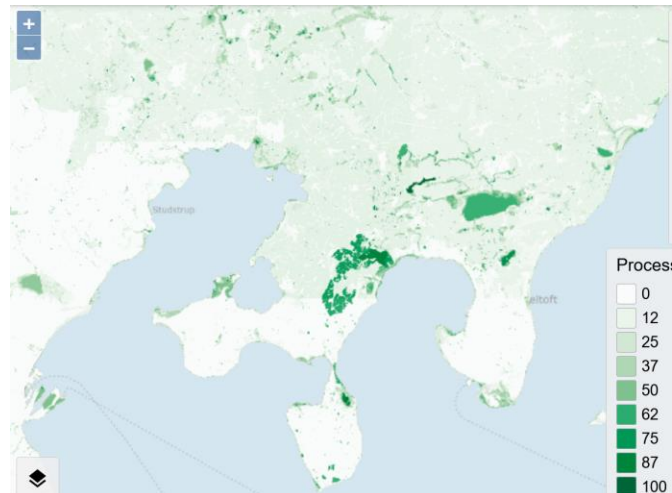
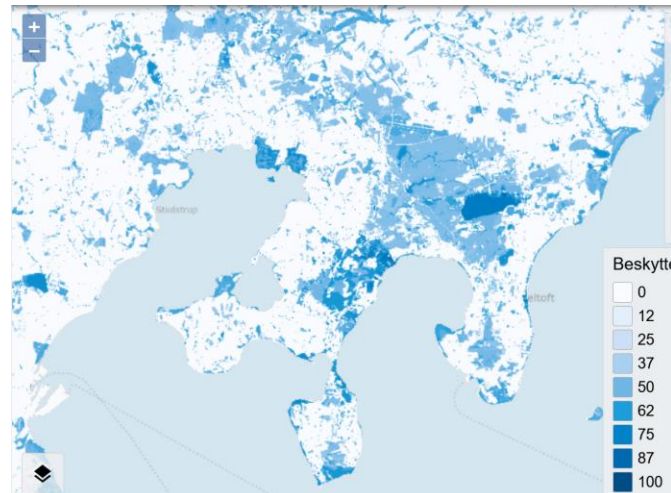
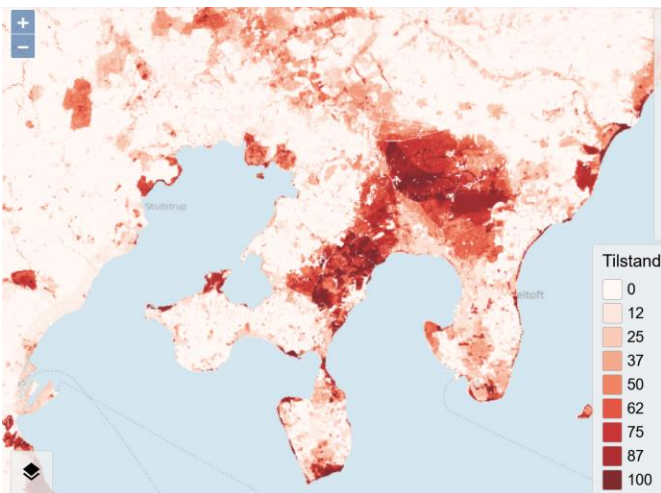
Europe's nature is in alarming decline, with more than 80% of habitats in poor condition. Restoring wetlands, rivers, forests, grasslands, marine ecosystems, and the species they host will help

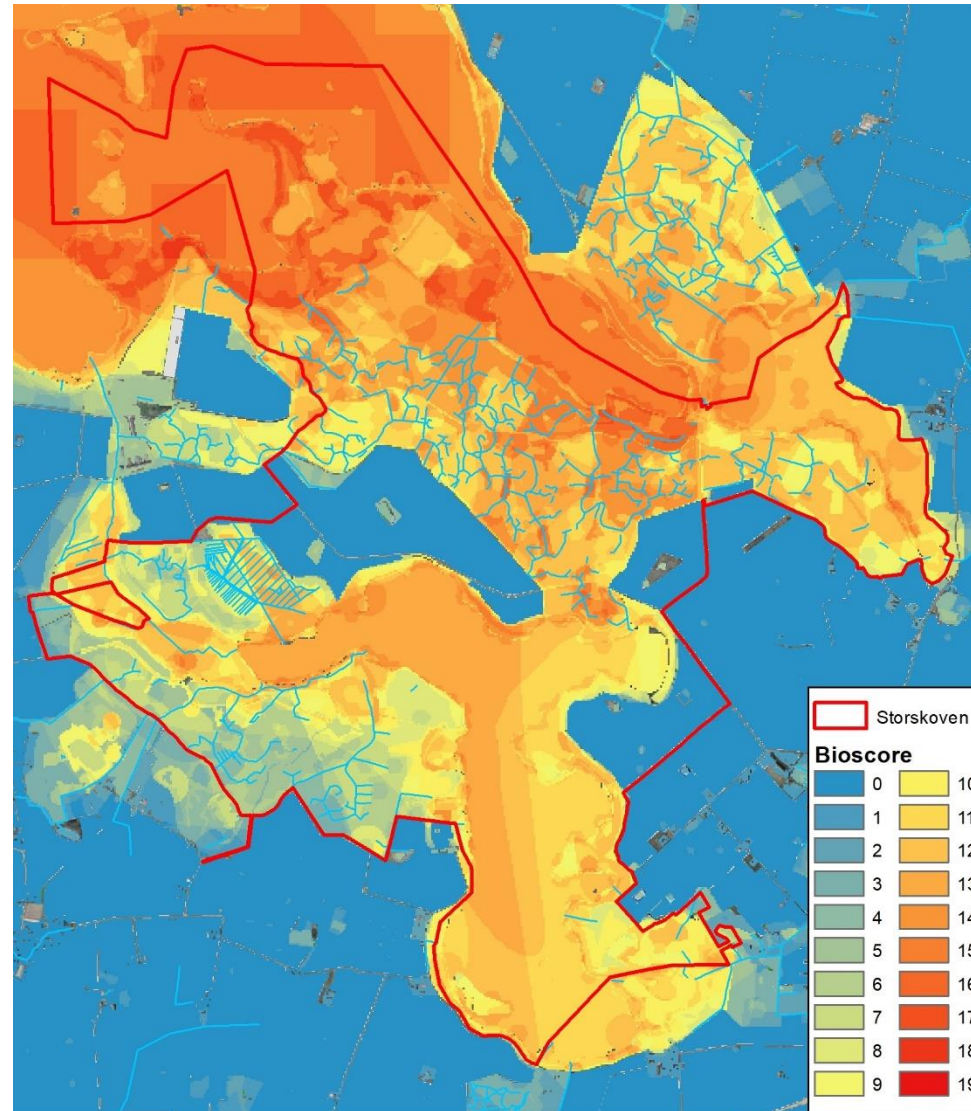
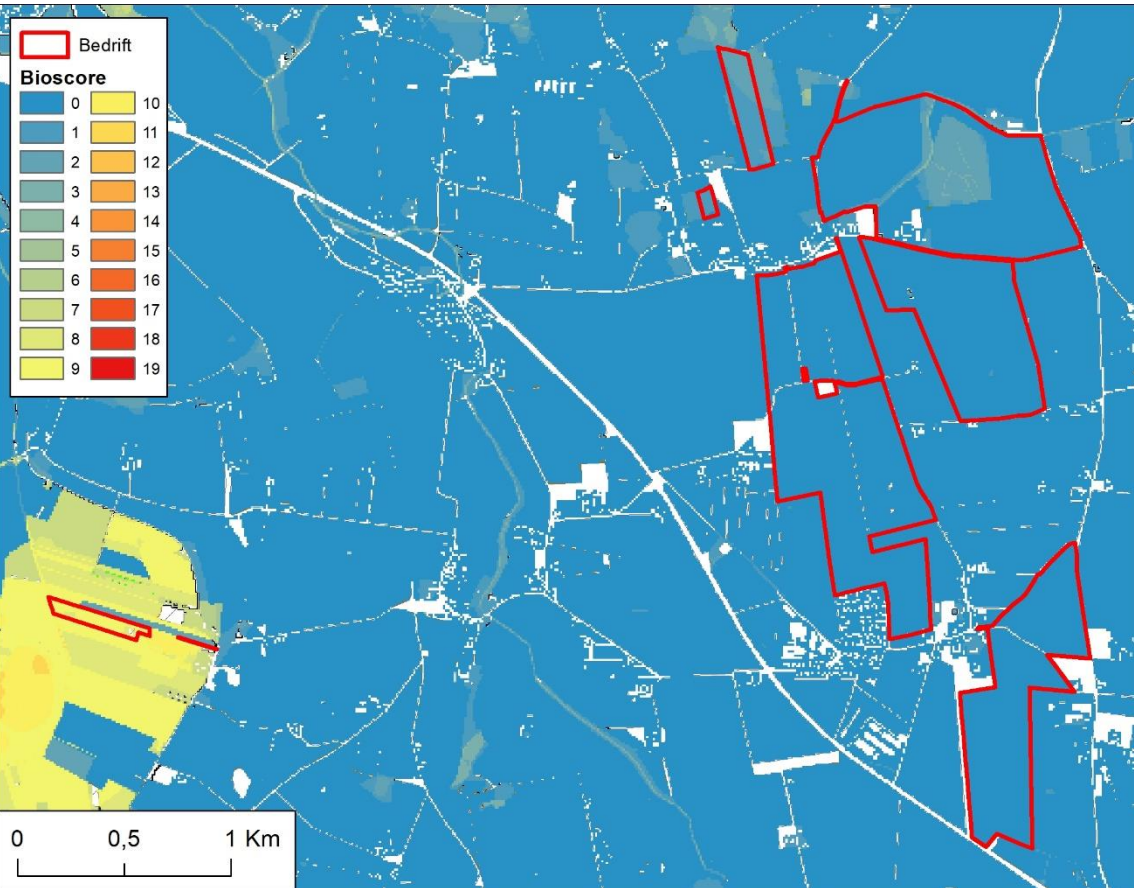
- increase biodiversity
- secure the things nature does for free, like cleaning our water and air, pollinating crops, and protecting us from floods
- limit global warming to 1.5°C
- build up Europe's resilience and strategic autonomy, preventing natural disasters and reducing risks to food security

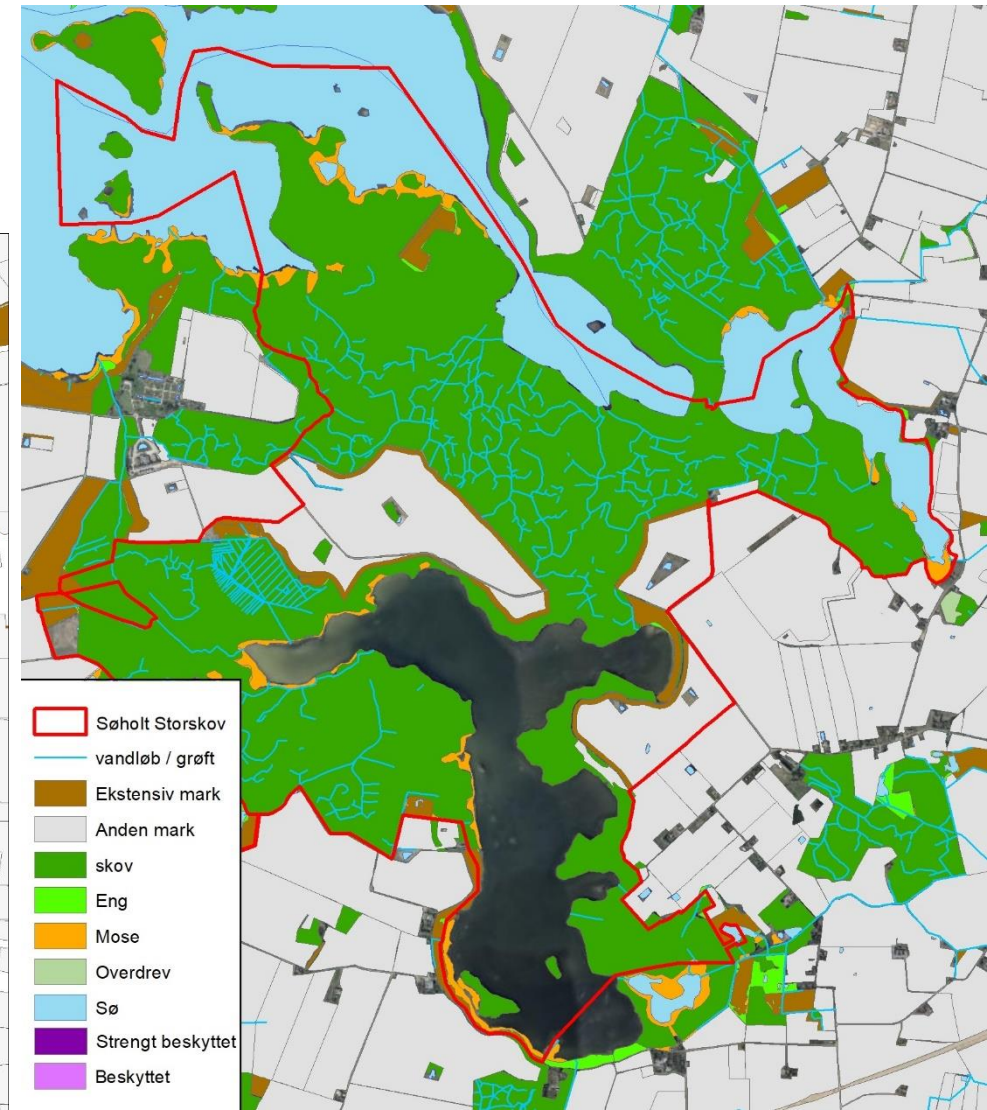
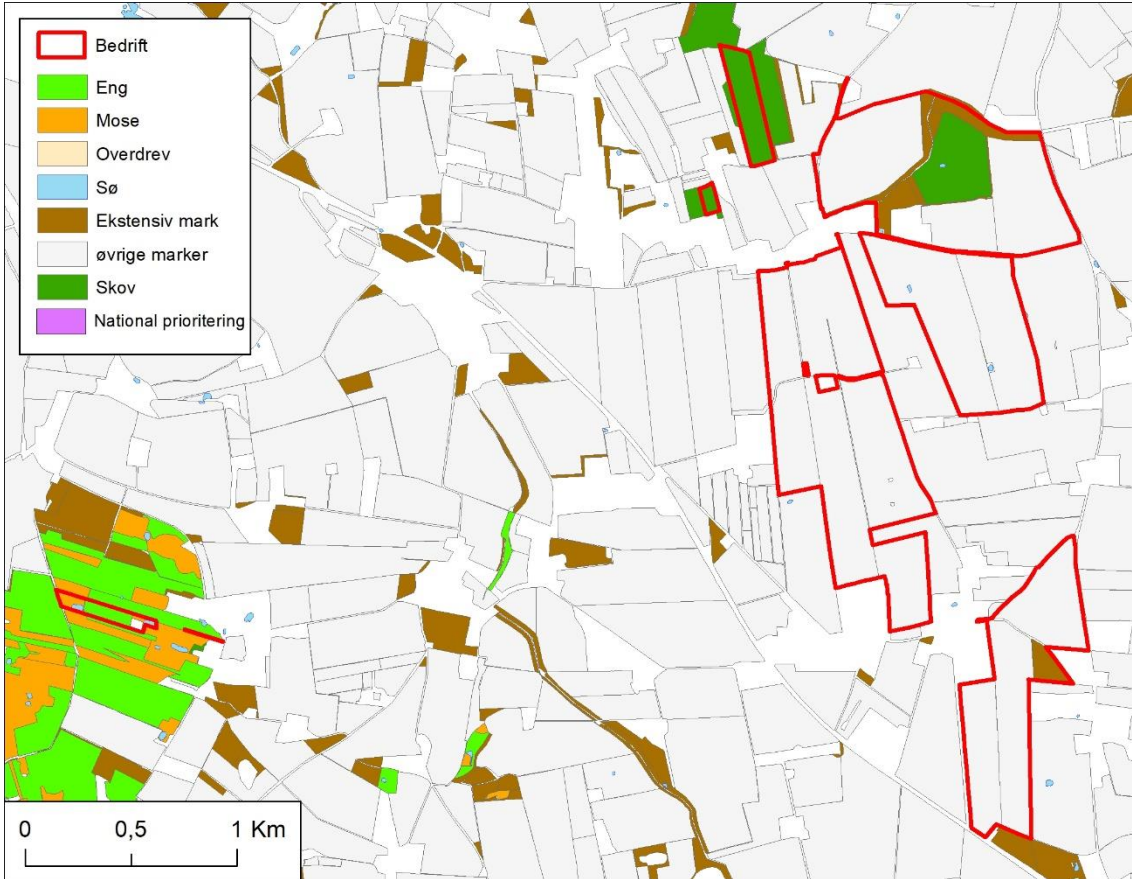


Nature Restoration Law

Genopretning af økosystemer i 2030/2050





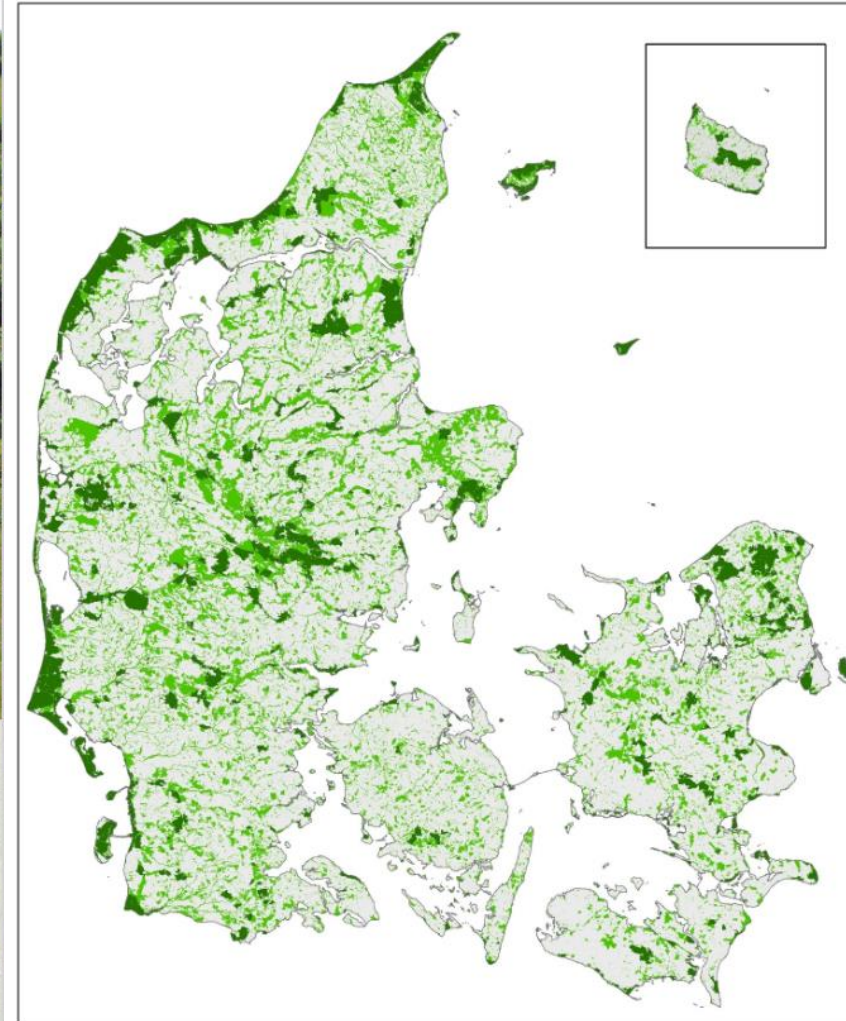




POTENTIALT FOR AT RESERVERE 30% AF LANDAREALET TIL BESKYTTEDE OG STRENGT BESKYTTEDE OMRÅDER I DANMARK

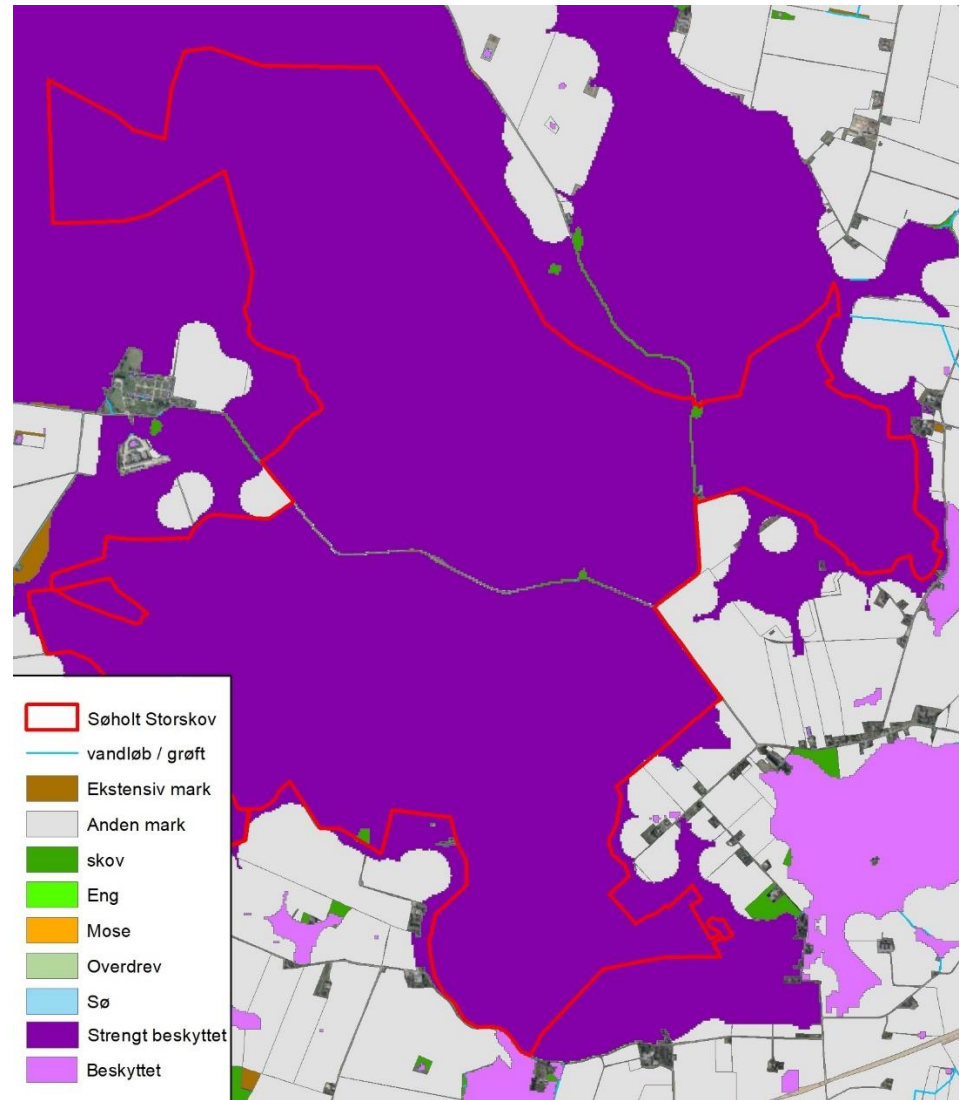
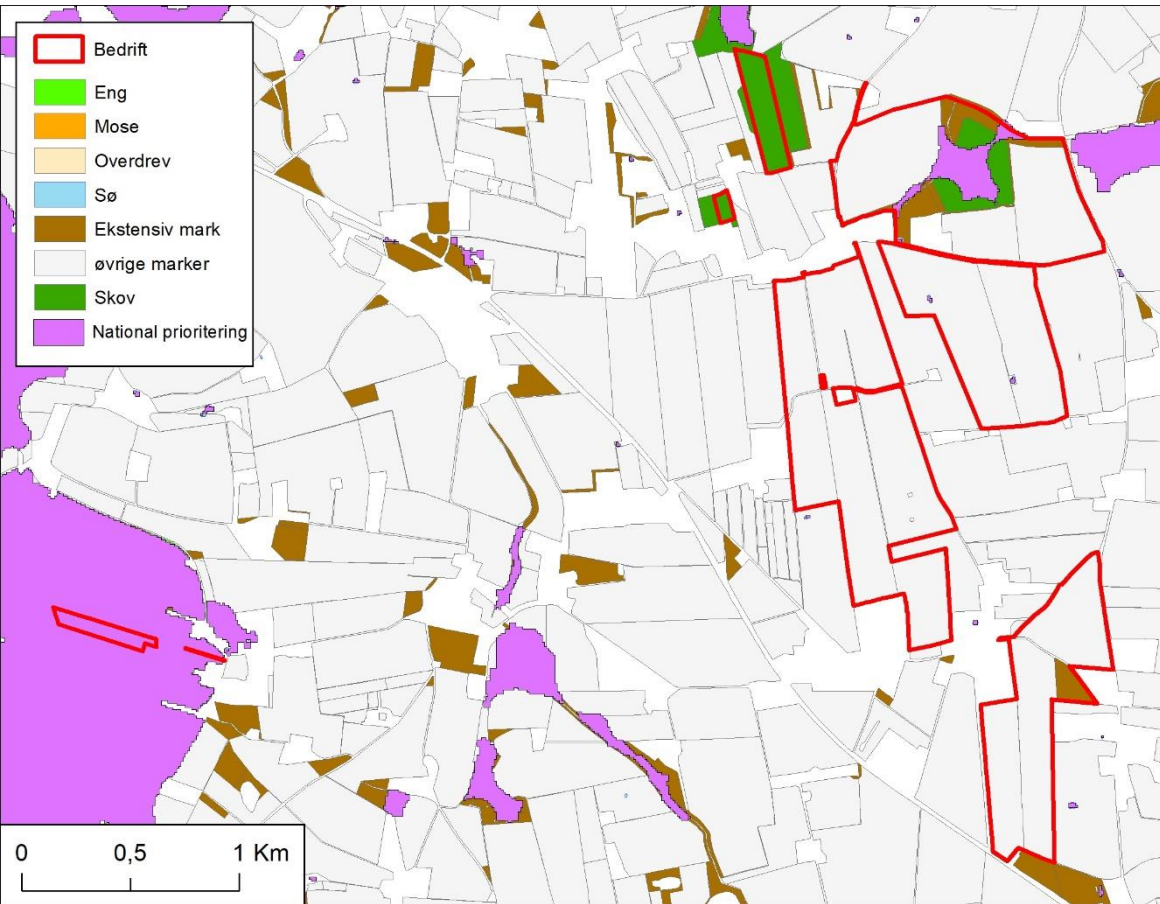
Videnskabelig rapport fra DCE - Nationalt Center for Miljø og Energi nr. 507 2022

 AARHUS
UNIVERSITET
DCE - NATIONALT CENTER FOR MILJØ OG ENERGI



Figur 5.1. Kort over arealer udpeget i scenarie 2 til hhv. 10 % af landarealet som strengt beskyttede områder (mørkegrøn) og 20 % beskyttede områder (lysegrøn).





BJERAGER – 241 HA



Kapital



Investering og vækst



Målopfylde og benchmarking

Metrik	Baseline	Scenarie	Tilvækst i %	Målopfylde i %
Tilstand	2.4	3.3	37 %	49 %
Processer	0.6	7.3	1074 %	73 %
Beskyttelse	4.5	8.0	79 %	84 %
DNI	0.32	1.6	397 %	37 %
Kapital	77	385	397 %	

SØHOLT – 951 HA



Kapital



Investering og vækst



Målopfyldelse og benchmarking

Metrik	Baseline	Scenarie	Tilvækst i %	Målopfyldelse i %
Tilstand	77.8	80.4	3 %	90 %
Processer	23.36	100	330 %	111 %
Beskyttelse	69.2	81.3	17 %	90 %
DNI	23.8	70.0	194 %	94 %
Kapital	22634	66537	194 %	