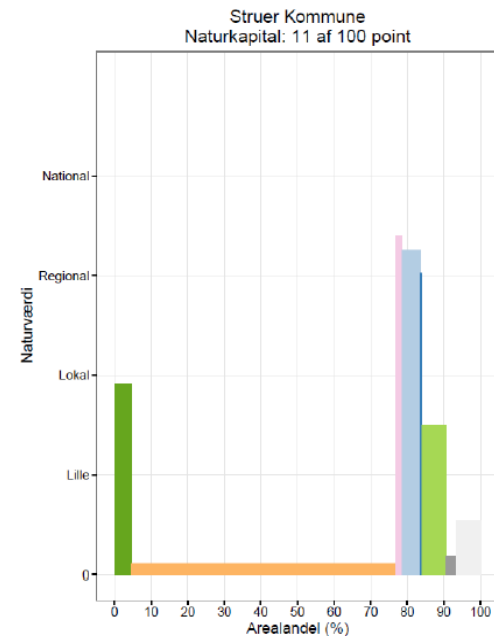
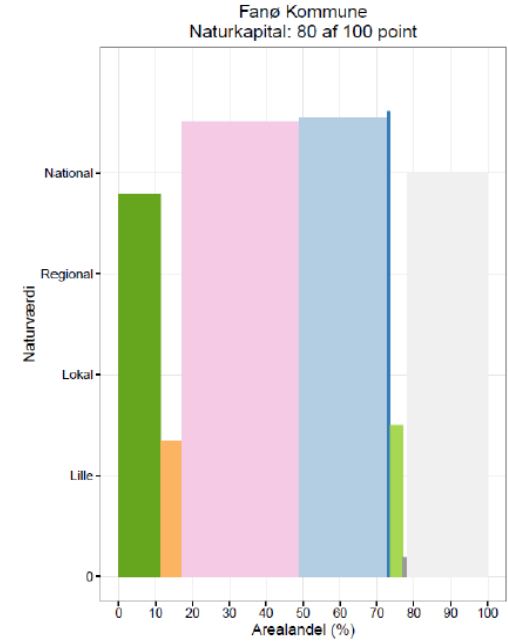
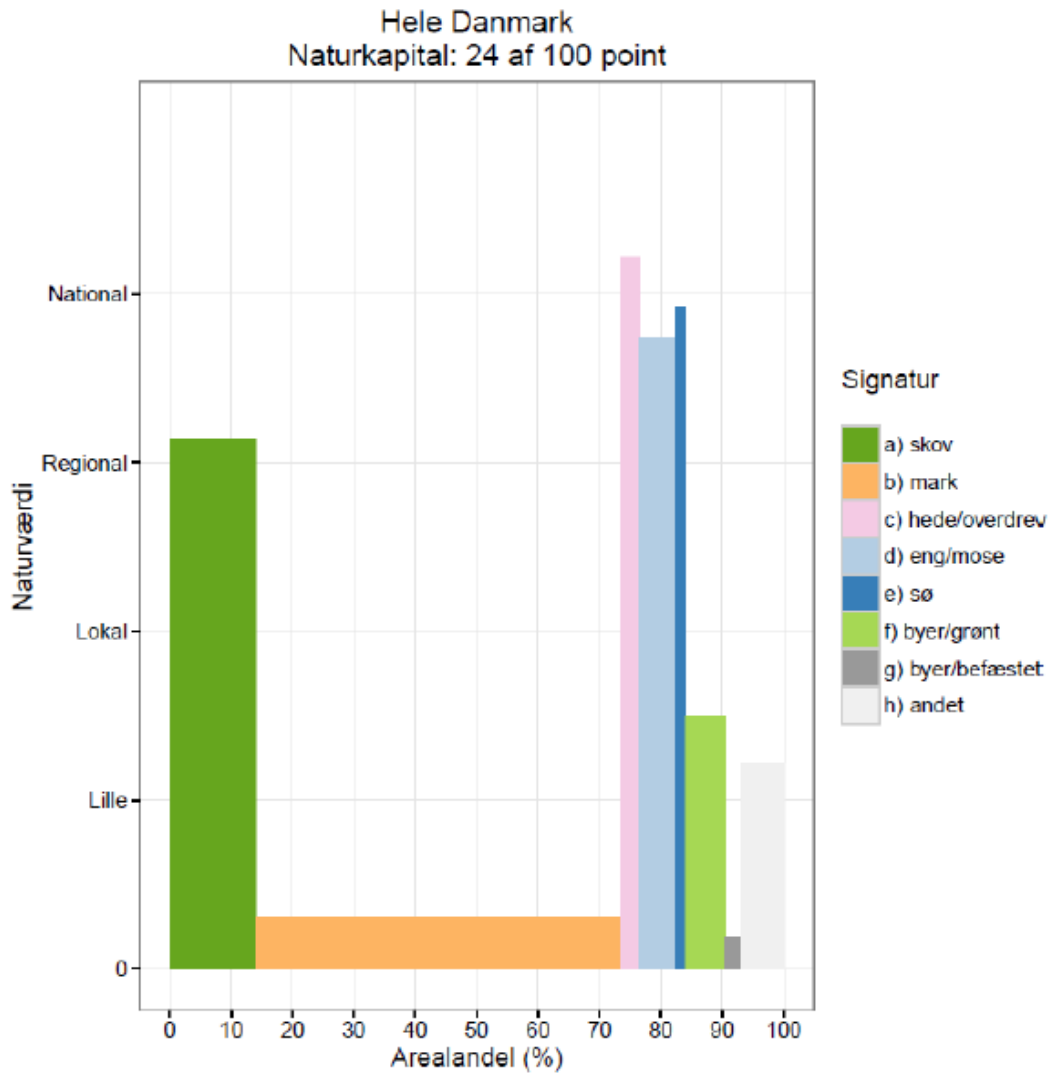


# En dansk naturindikator

Rasmus Ejrnæs, Lars Dalby, Jesper Bladt, Pål Pedersen, Gregor Levin, Bettina Nygaard, Camilla Fløjgaard



# Naturkapitalindekset (NKI)



## I DET FYNSKE FOLKS TJENESTE

Vi bruger cookies til at huske indstillinger og indsamle statistik, så vi kan forbedre din oplevelse af siden. Hvis du ikke vil, kan du [afvise cookies](#). [Læs mere](#)

# Ny opgørelse: Fyn er fattig på natur



# Datagrundlaget = biodiversitetskortet

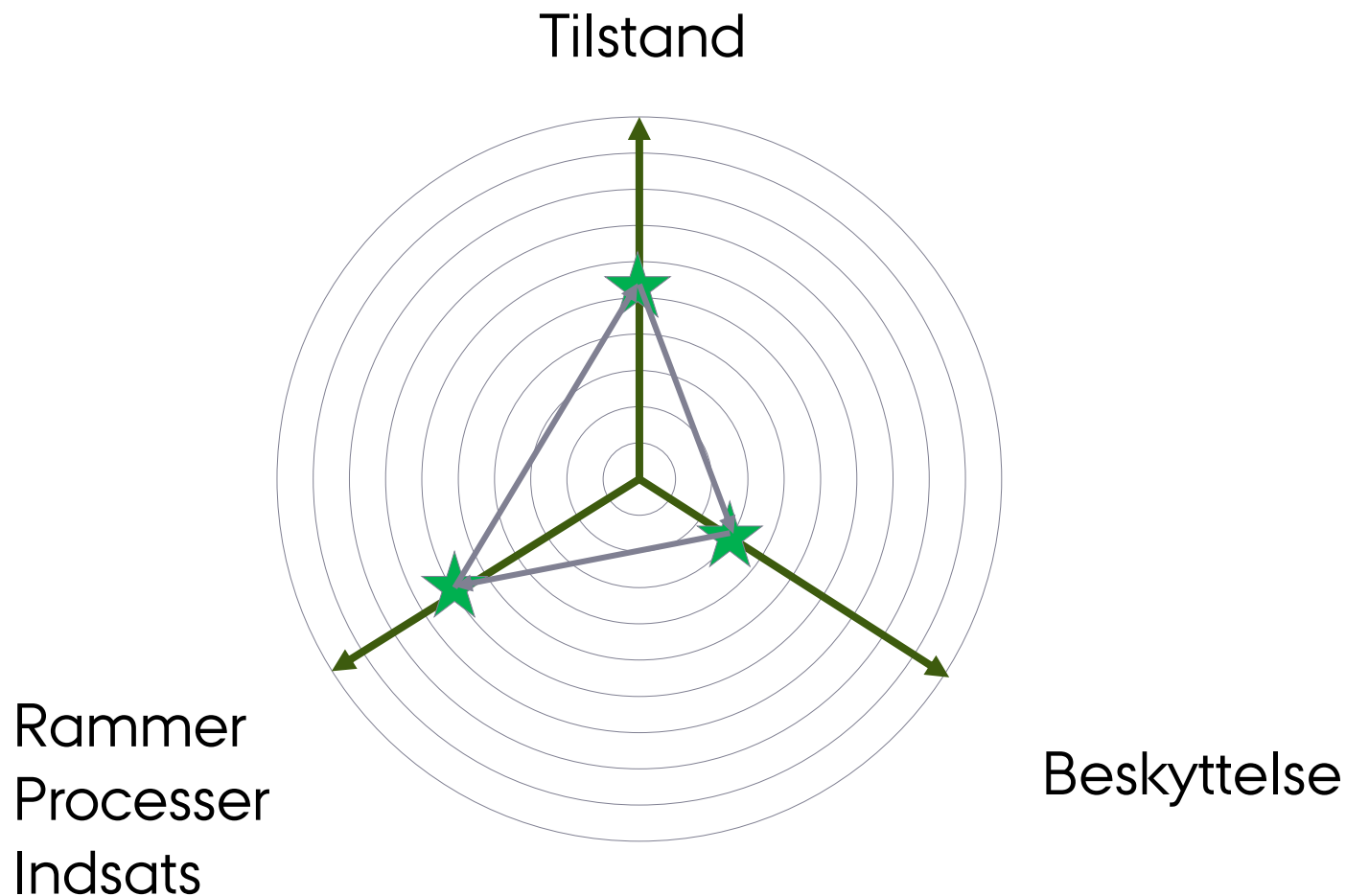


# Det er tungt at forbedre naturkapitalen

1. Dokumentere ukendt tilstand af de gode naturområder (øger bioscoren straks)
2. Dokumentere ukendte forekomster af sårbare og truede arter (øger bioscoren straks)
3. Konvertere landbrugsjord til natur (øger bioscoren straks og over tid)
4. Ekstensivere driften ved braklægning, flerårig græsning eller ekstensive, flerårige afgrøder (øger bioscoren straks)
5. Forbedre vilkår/beskyttelse for sårbare og truede arter og deres levesteder (øger bioscoren over tid) – højeste prioritet jf Brandmandens Lov

Men hvad nu hvis man tinglyser bedre naturbeskyttelse eller laver naturgenopretning?

# En dansk naturindikator



# Hvad med beskyttelsen?

AICHI

## Target 5

By 2020, the rate of loss of all natural habitats, including forests, is at least halved and where feasible brought close to zero, and degradation and fragmentation is significantly reduced.

## Target 11

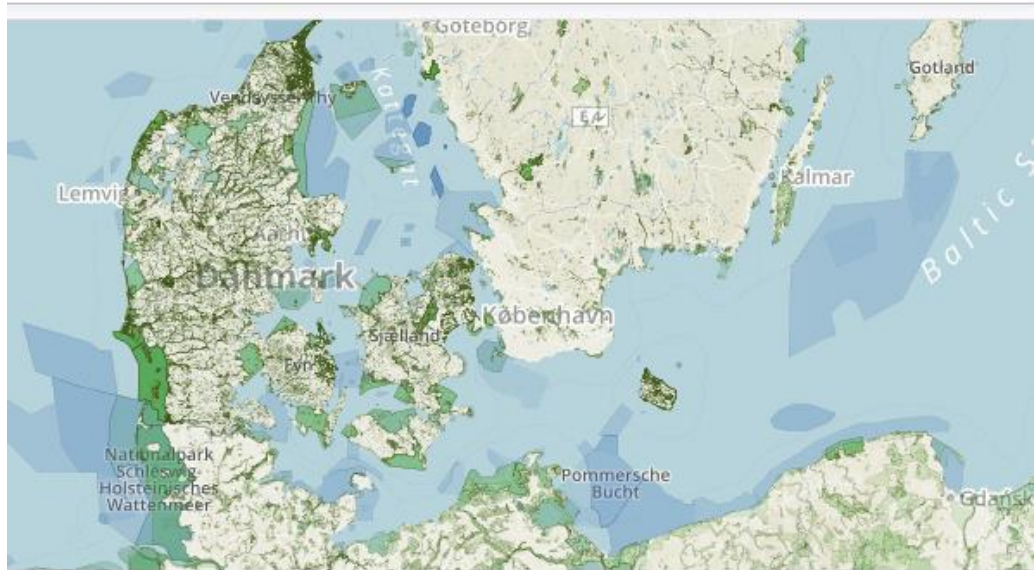
By 2020, at least 17 per cent of terrestrial and inland water, and 10 per cent of coastal and marine areas, especially areas of particular importance for biodiversity and ecosystem services, are conserved...

## Target 12

By 2020 the extinction of known threatened species has been prevented and their conservation status, particularly of those most in decline, has been improved and sustained.

/country/DK

67%

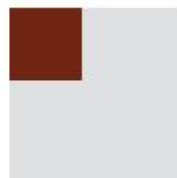


of material on this map do not imply the expression of any opinion whatsoever on the part of the  
ny country, territory, city or area or of its authorities, or concerning the delimitation of its frontie

Protected areas coverage (Ref 1 ↓)



Area terrestrial



**18.1%**

coverage

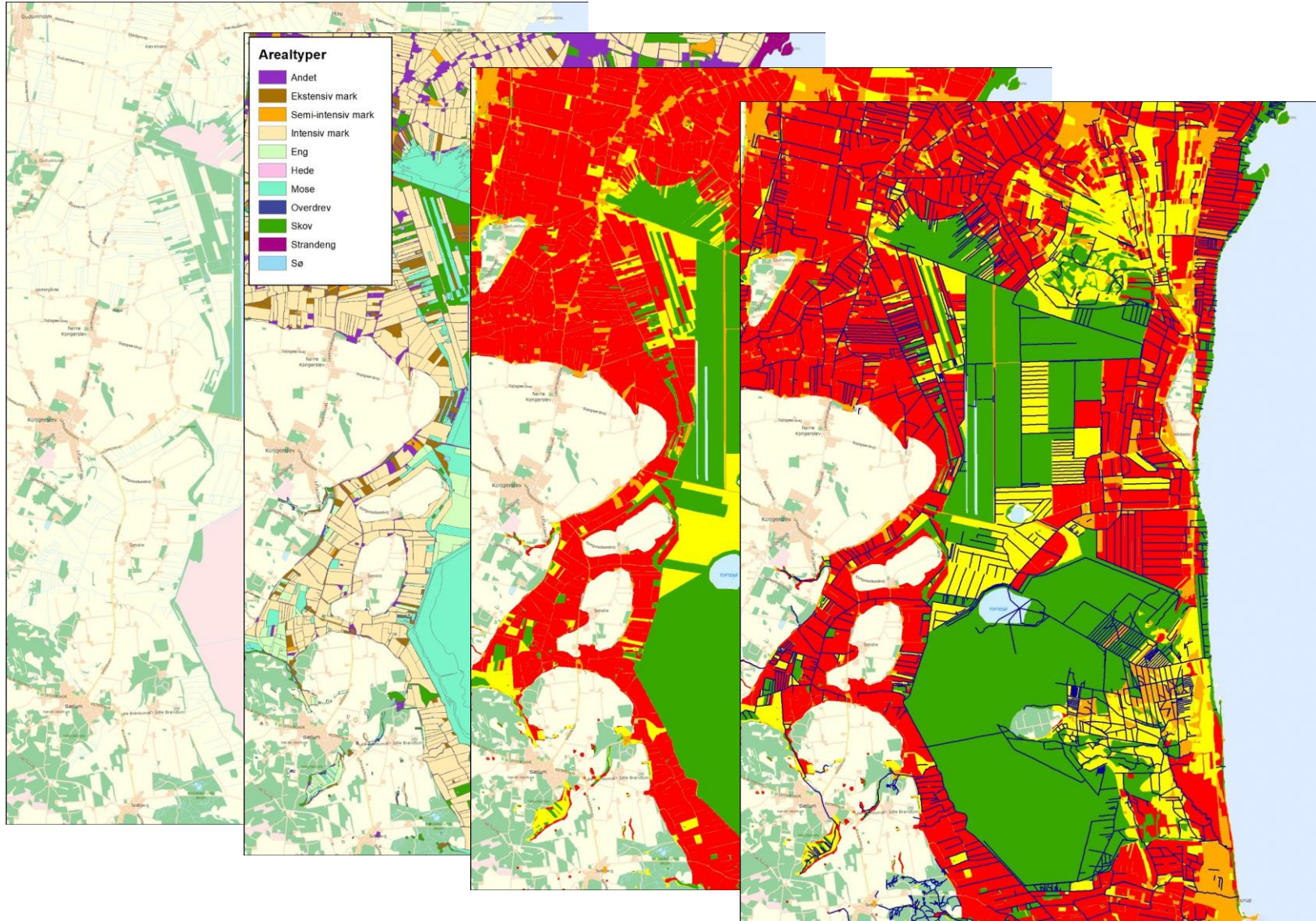
**8,203 km<sup>2</sup>**

Land Area Protected

**45,314 km<sup>2</sup>**

Total Land Area

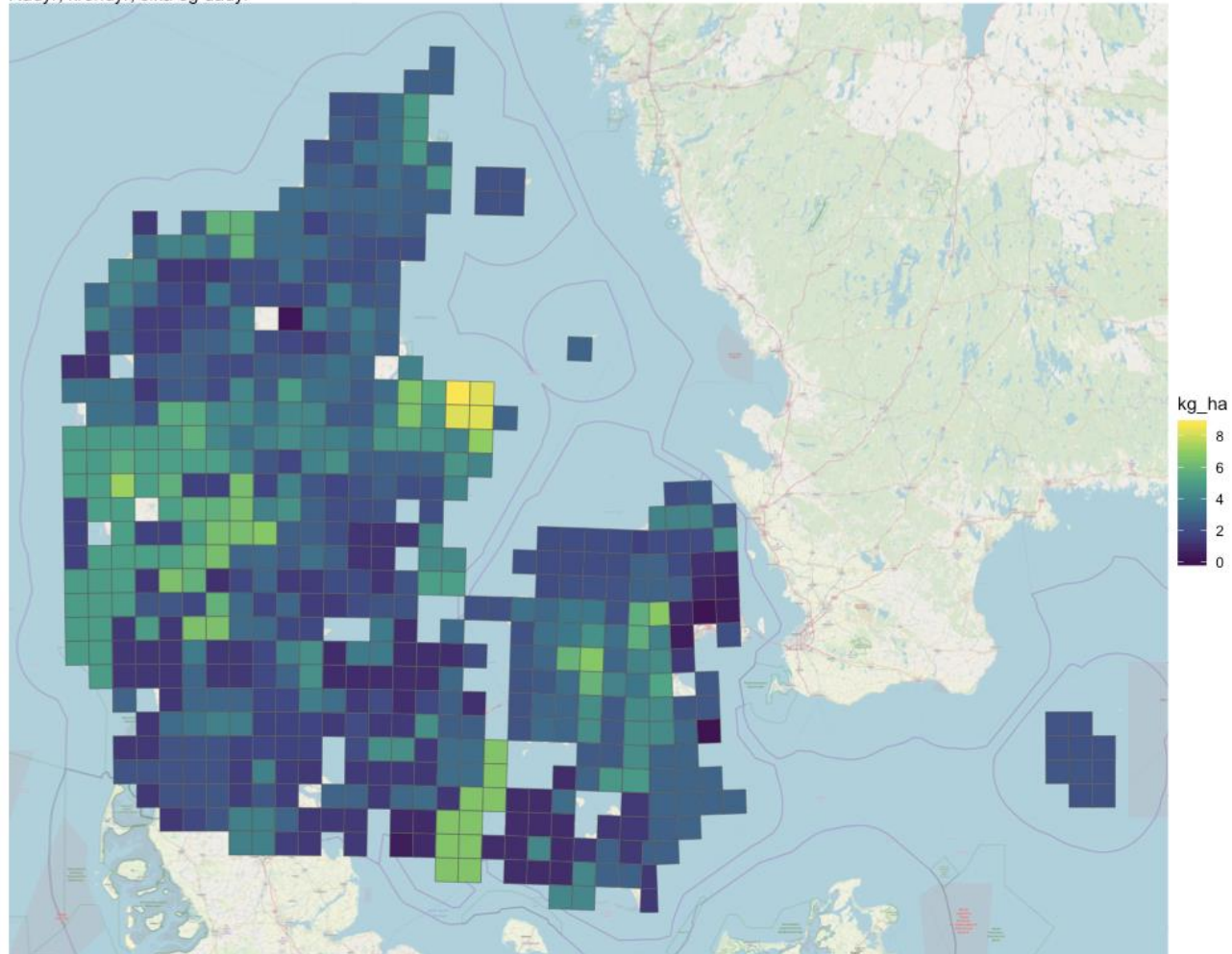
# Rammer/processer: Hydrologi



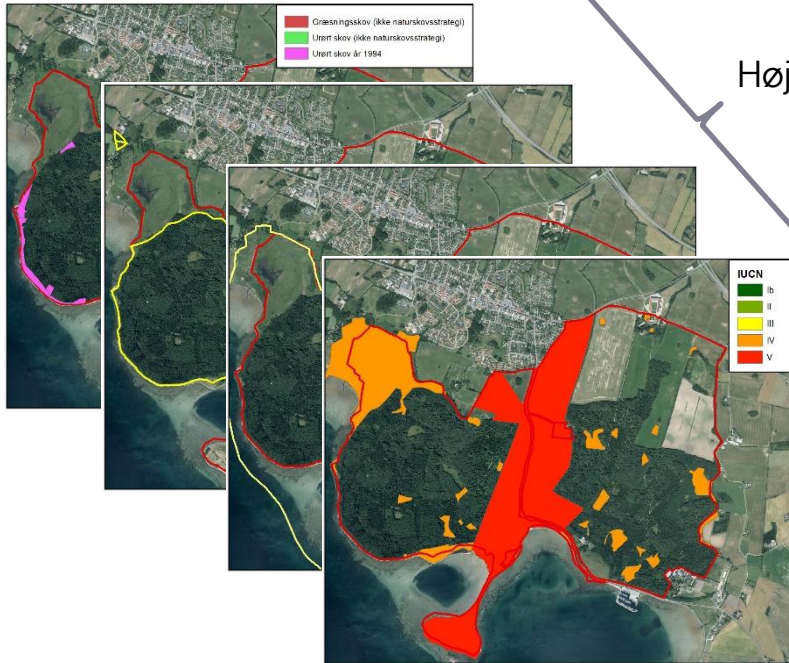


# Rammer/processer: Græsning

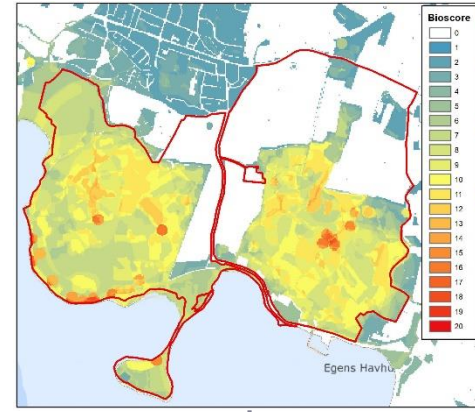
Tæthed af vilde græssere  
Rådyr, krondyr, sika og dådyr



# Kalø

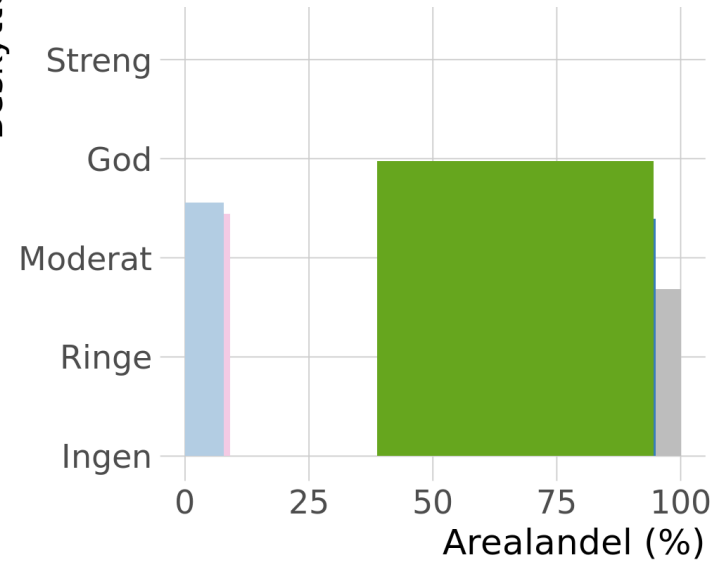


Højeste score \*



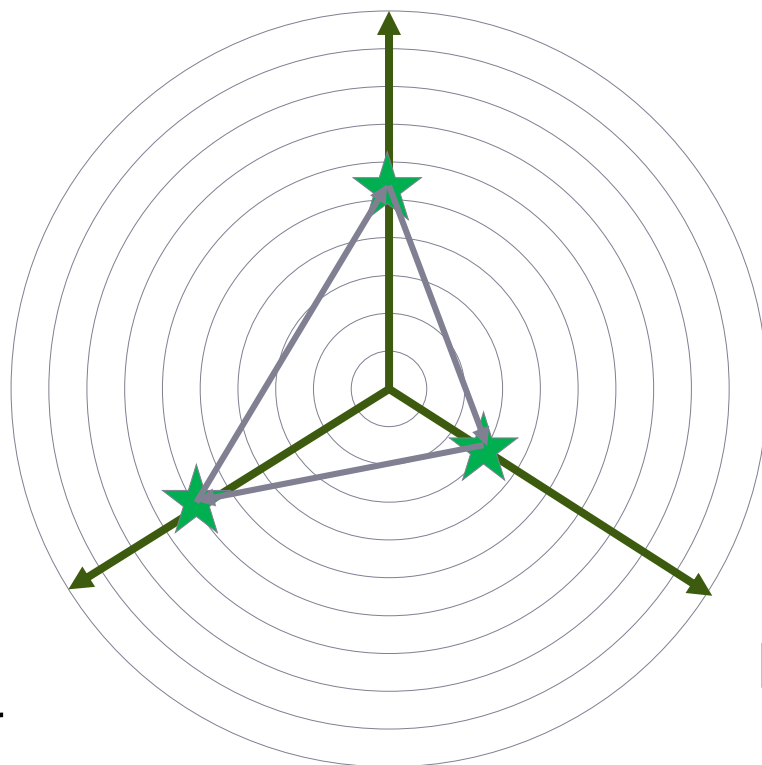
Beskyttelsesgrad: 40

Beskyttelse

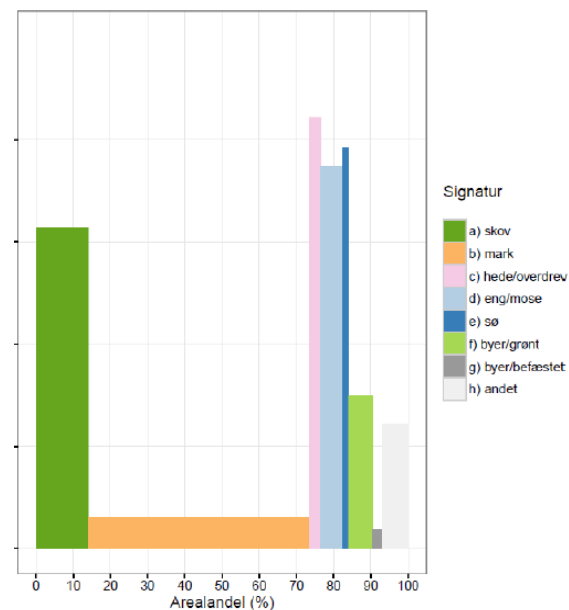


# En dansk naturindikator

Tilstand



Rammer  
Processer  
Indsats



Beskyttelse