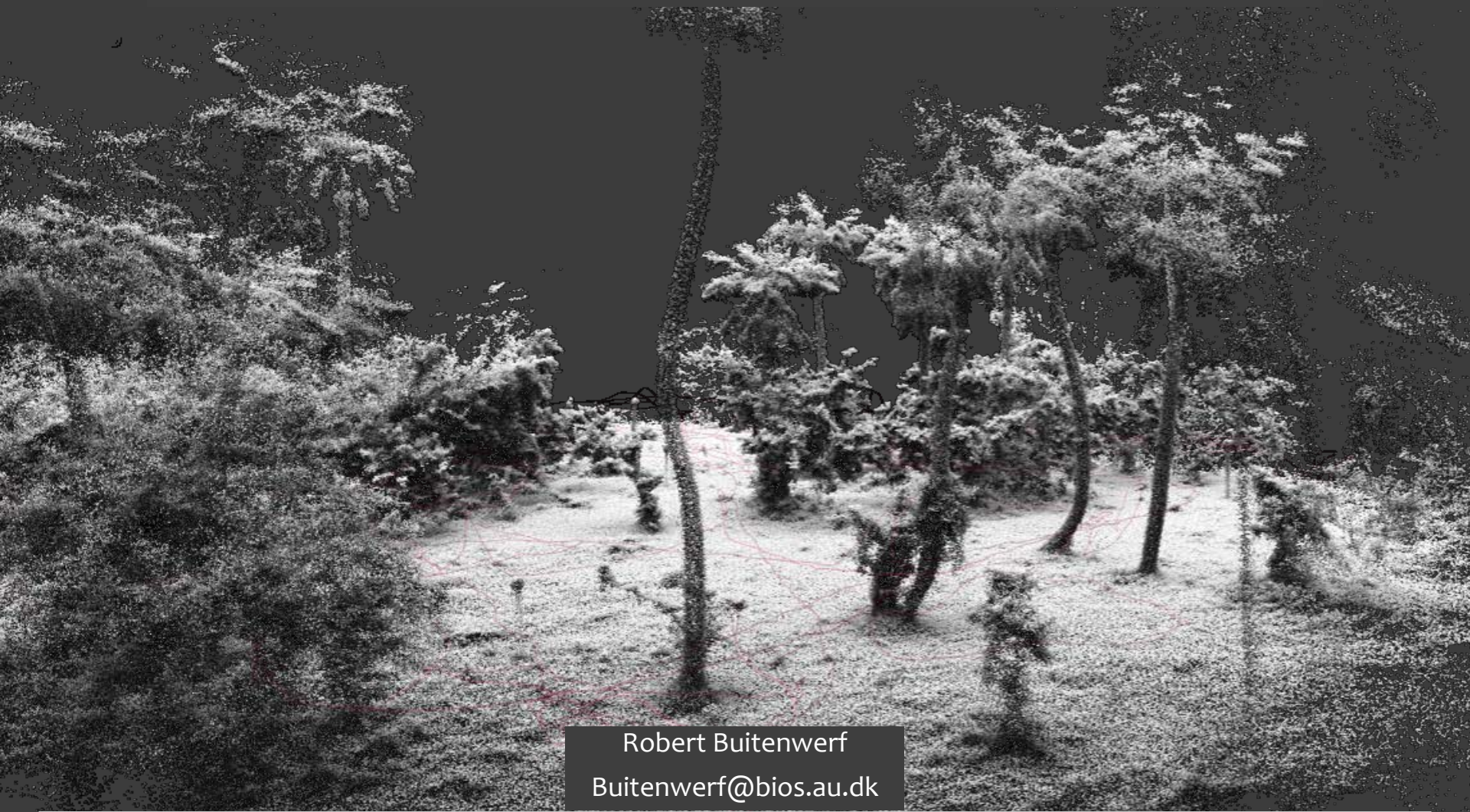
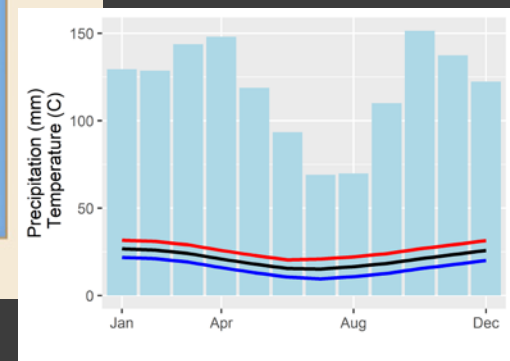
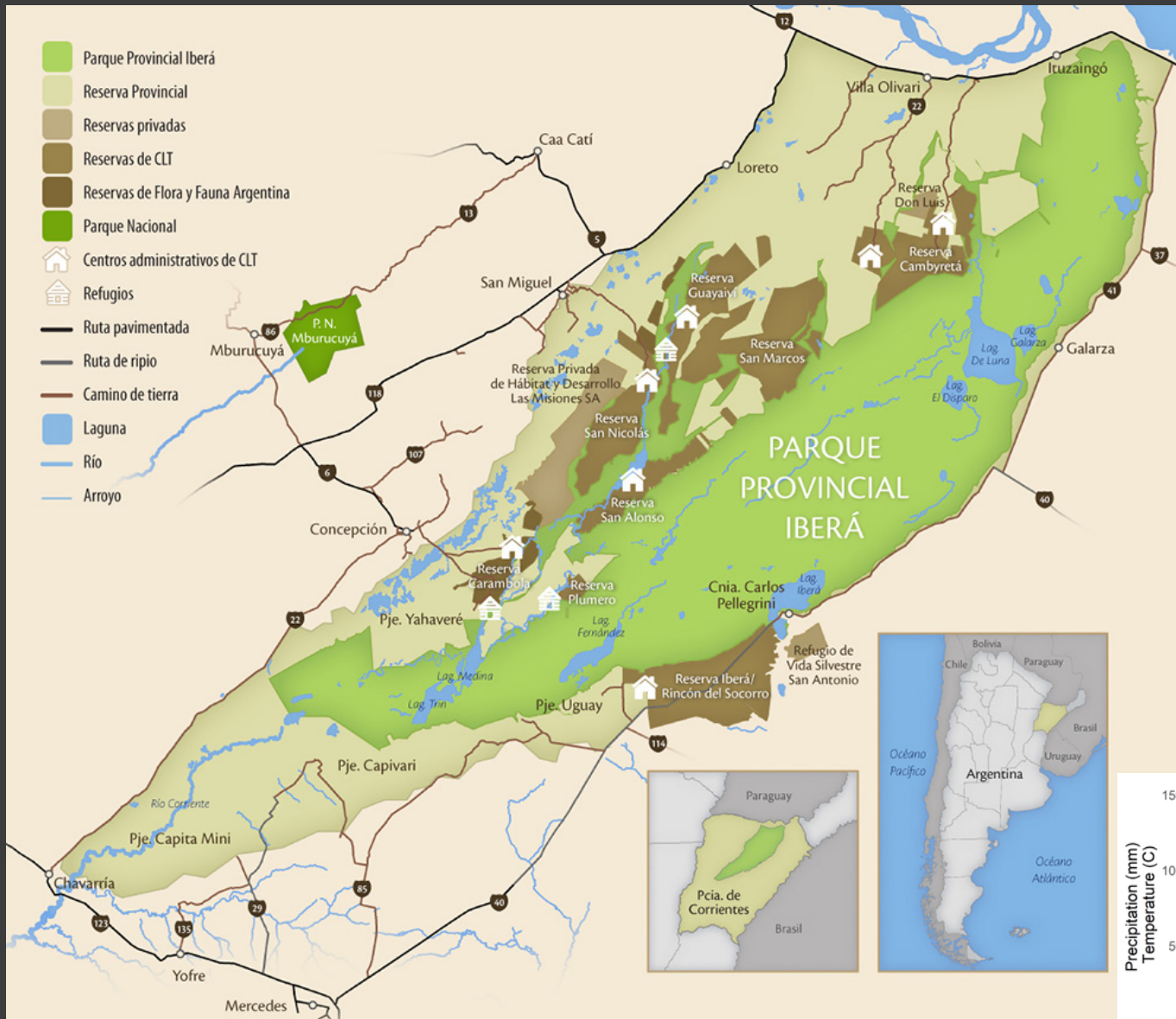


Rewilding in savannas



Robert Buitenwerf
Buitenwerf@bios.au.dk

Rewilding in South America



Landscapes and vegetation



Images: Robert Buitenwerf, JC
Svenning, Dennis Pedersen



Native



Hydrochoerus hydrochaeris



Rhea americana



Blastocerus dichotomus



Mazama sp.

Native
Reintroduced



Pecari tajacu



Tapirus terrestris



Ozotoceros bezoarticus

Non-native



Axis axis



Sus (scrofa?)

A selection of other native species

Not reintroduced



Alouatta caraya



Caiman yacare



Panthera onca

?

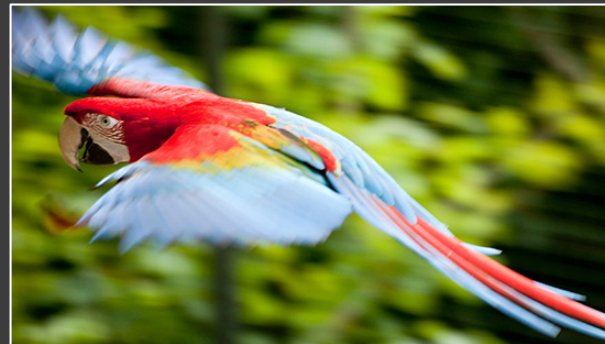


Chrysocyon brachyurus

Reintroduced



Myrmecophaga tridactyla



Ara chloropterus



Cariama cristata

Historical baseline



Why rewild: why not?



Why rewild: Restore self-managing ecosystems

Denmark



Oskar Liset Pryds Hansen

Argentina



Capybara grazing lawns?



Exclosure study

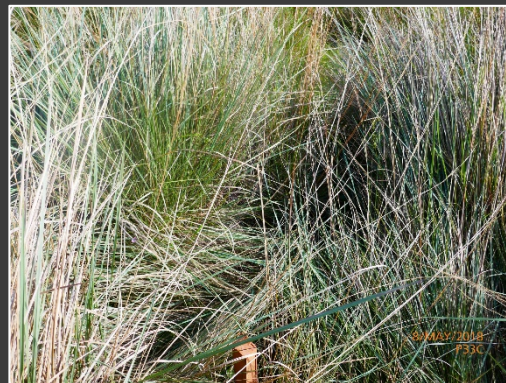
PhD student
Julia Mata



Grazing
lawn



Transitional
grassland



Tall grass

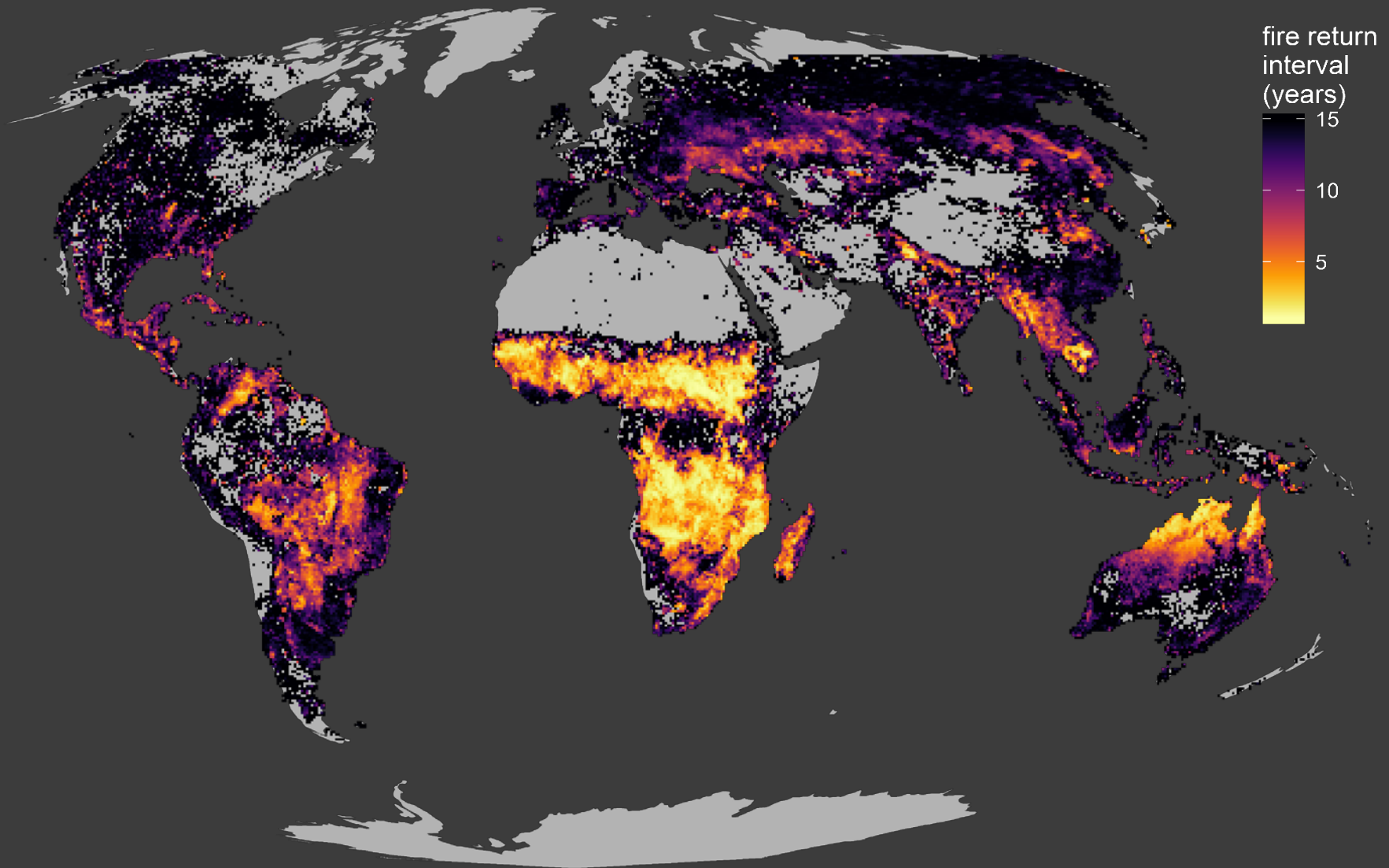
Exclosure study

PhD student
Julia Mata



Image Julia Mata

Global fire regimes



Data from MODIS sensor

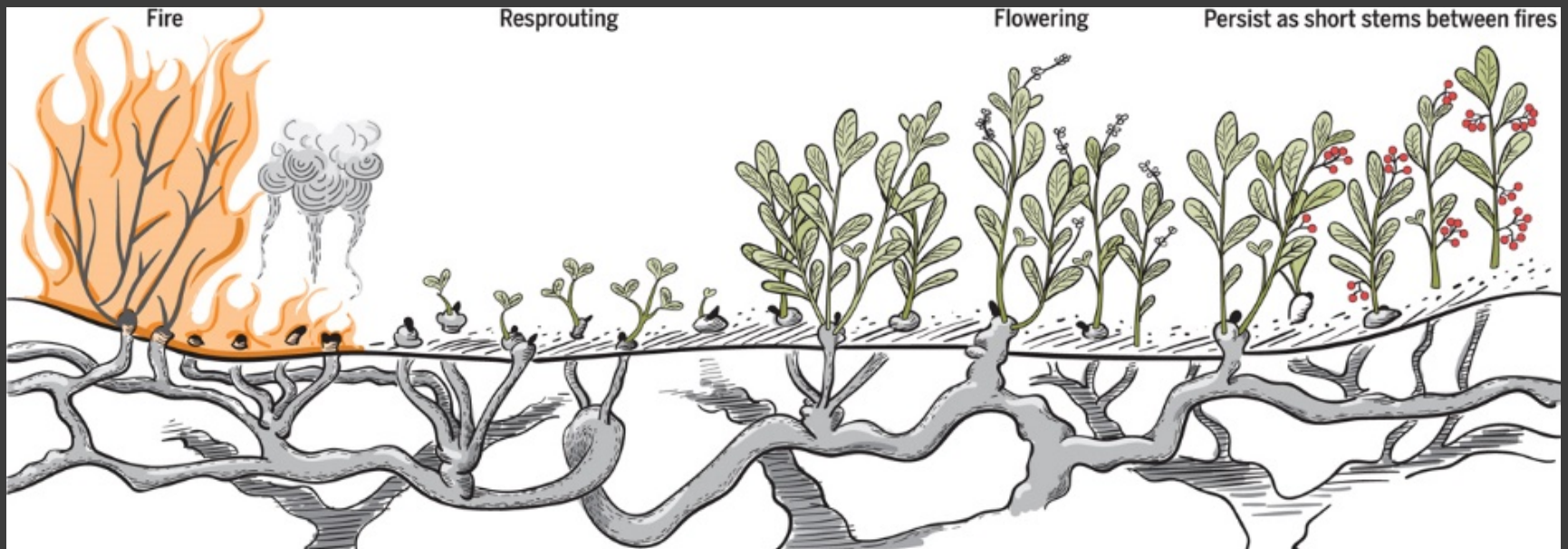
Fire adaptations in savanna plants

Resprouting

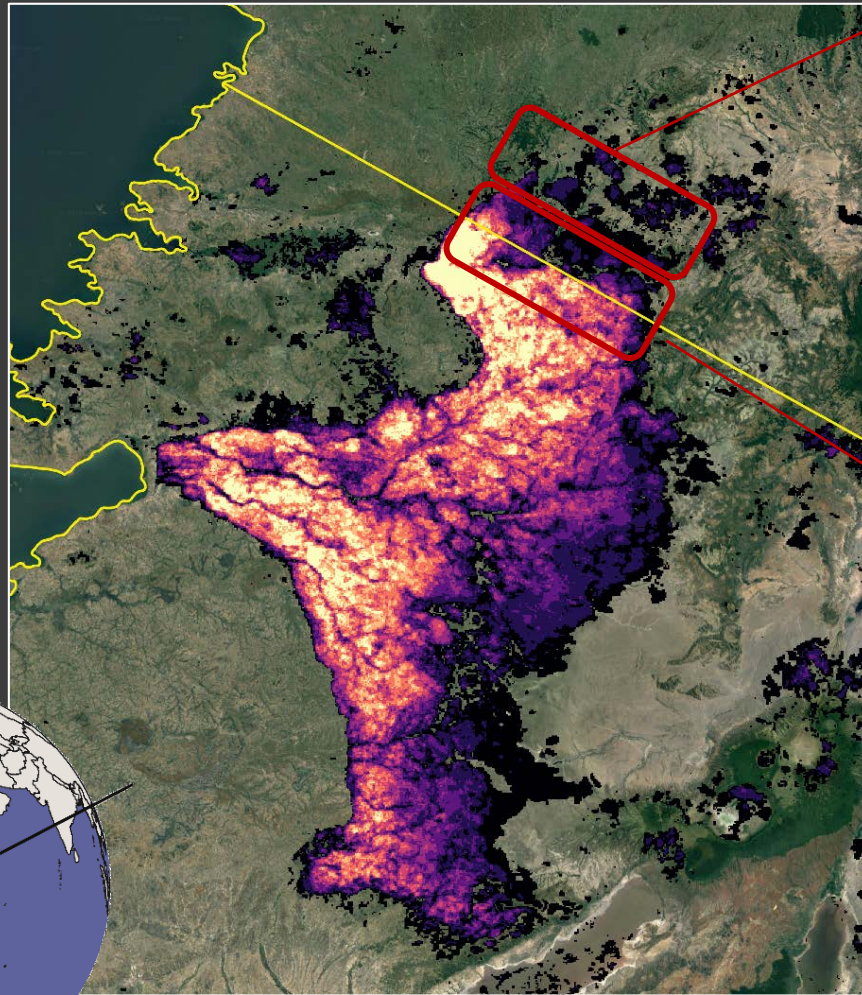
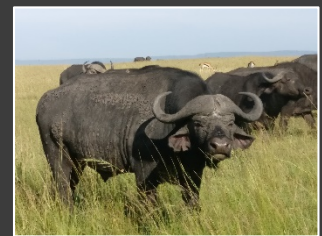


<http://www.fynboshub.co.za/fynbos-ecology/fire-diary-week-3-21-february/>

“Underground trees”



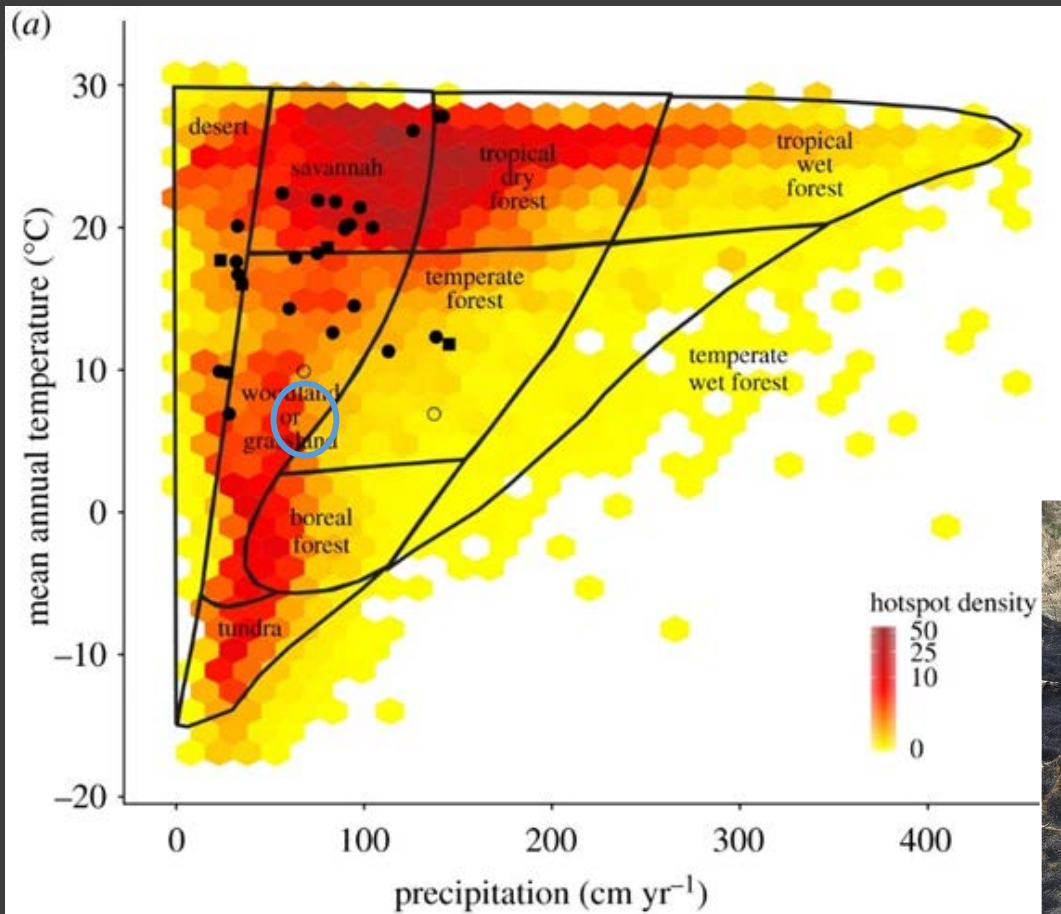
Fire-Herbivore interactions in the Serengeti-Mara



Capybara grazing lawns?



Fire in Denmark?



Grazing and fire experiment in southern Sweden key processes for biodiversity restoration in the temperate zone

