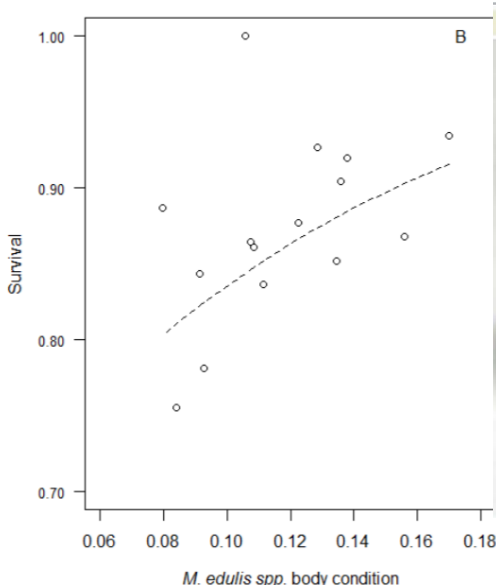
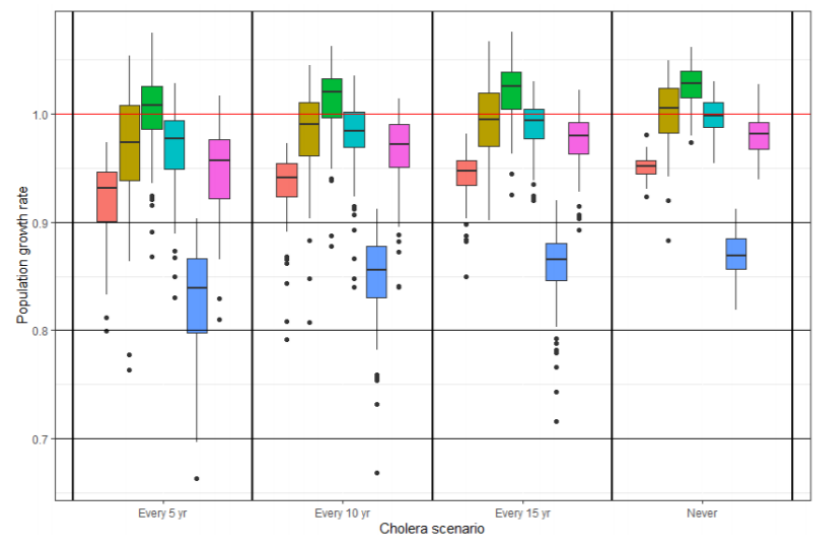
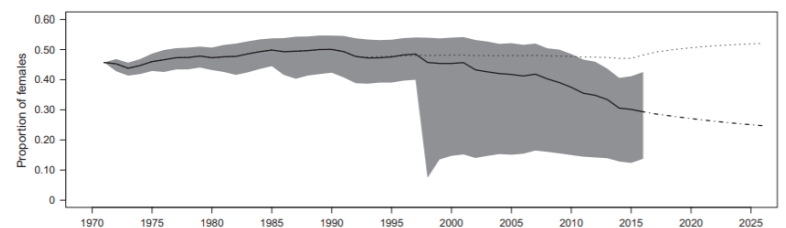
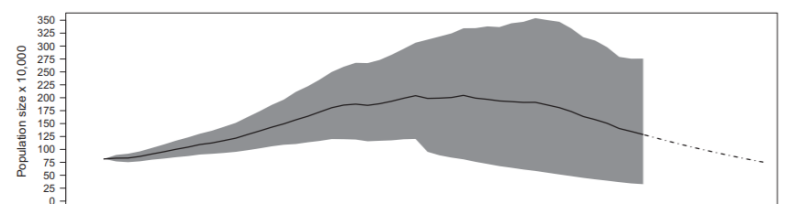
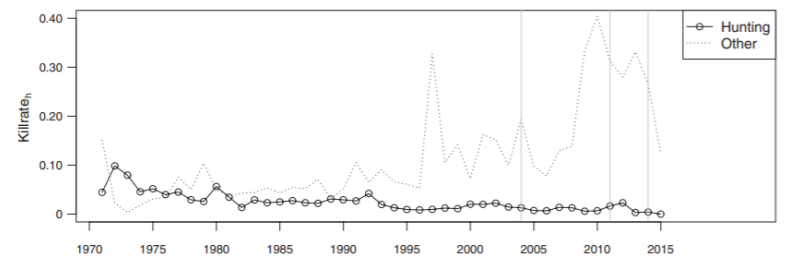
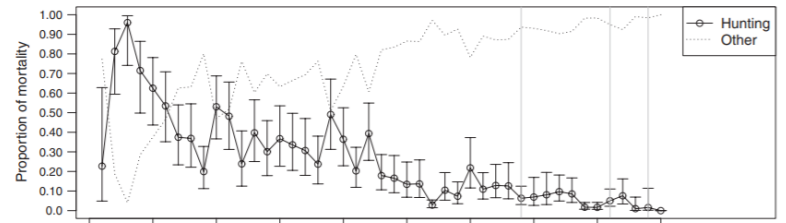


# Population dynamics of a declining flyway population of eiders

PhD project by Rune Skjold Tjørnløv



Over the past decades the Baltic/Wadden Sea flyway population of Common Eiders has suffered a population loss of an estimated 40%. This has invoked increased conservation concern. The prolonged negative population trend entailed a ban on shooting females imposed in Denmark in 2014 to be evaluated in 2018. The objective of this thesis is to evaluate the population effect of the imposed hunting ban and to investigate the role of different environmental drivers in shaping flyway population dynamics. These tasks were completed by estimating long time-series of colony-specific survival rates based on an extensive number of ringed Eider females.



Despite largely shared wintering grounds, none of the tested covariates operating during winter had a universal effect on female survival, but the quality of blue mussels *Mytilus spp.* had an effect on Eider survival at Christiansø



To be defended 14 feb 2020