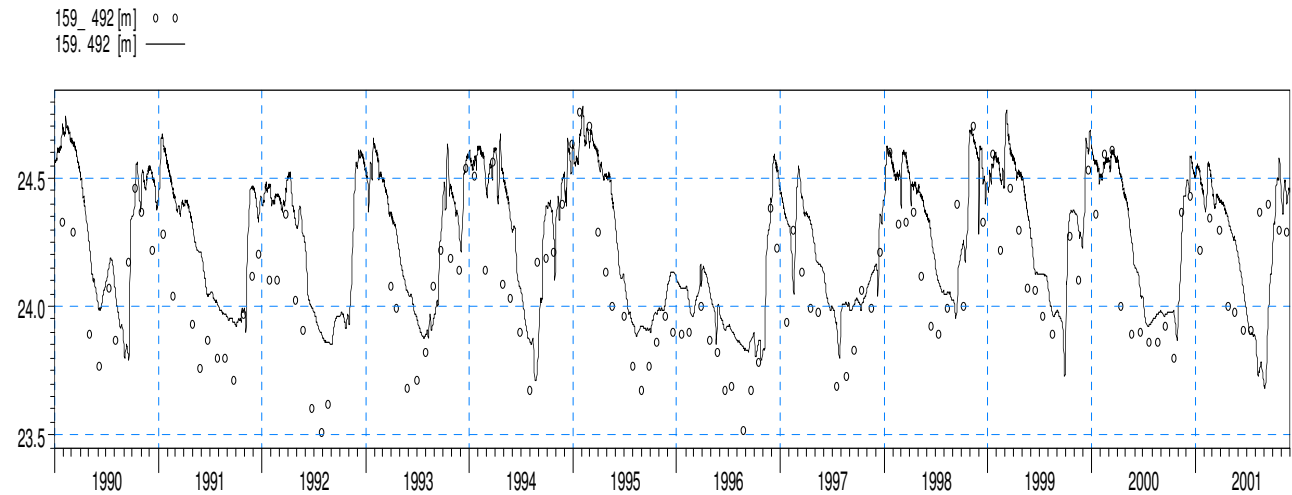
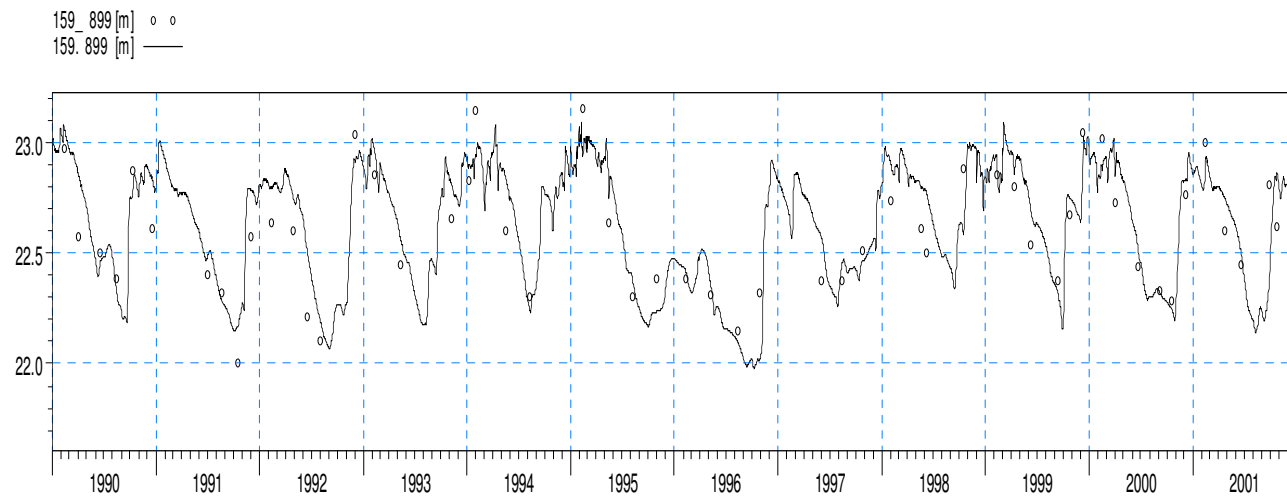


### 159. 492, head elevation in saturated zone



ME=-0.159566  
MAE=0.210164  
RMSE=0.24593  
STDres=0.187138  
R(Correlation)=0.755632  
R2(Nash\_Sutcliffe)=0.206945

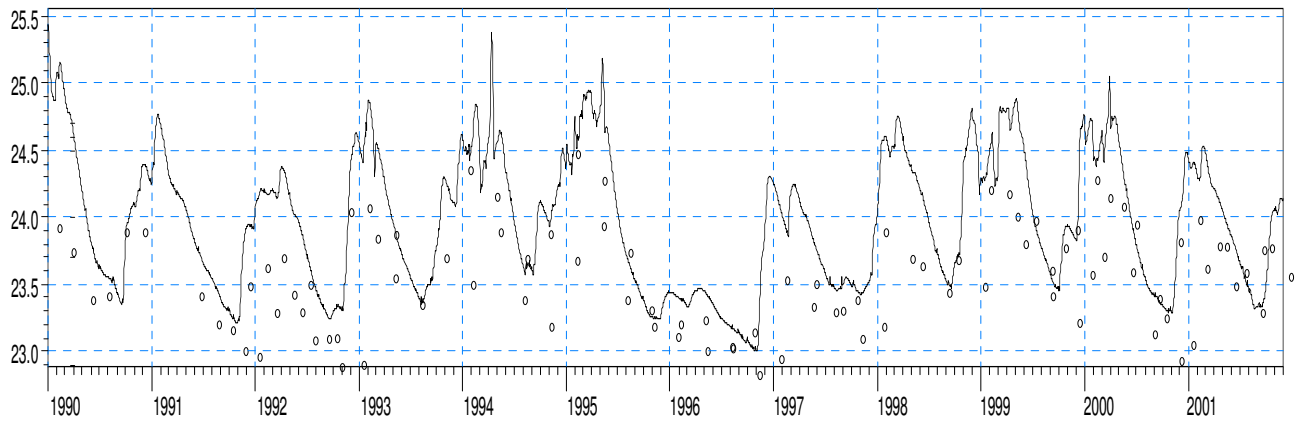
### 159. 899, head elevation in saturated zone



ME=-0.0379673  
MAE=0.139072  
RMSE=0.166222  
ST<sub>R</sub>2(Nash\_Sutcliffe)=0.620029  
R(Correlation)=0.818377  
R2(Nash\_Sutcliffe)=0.620029

### 159. 905, head elevation in saturated zone

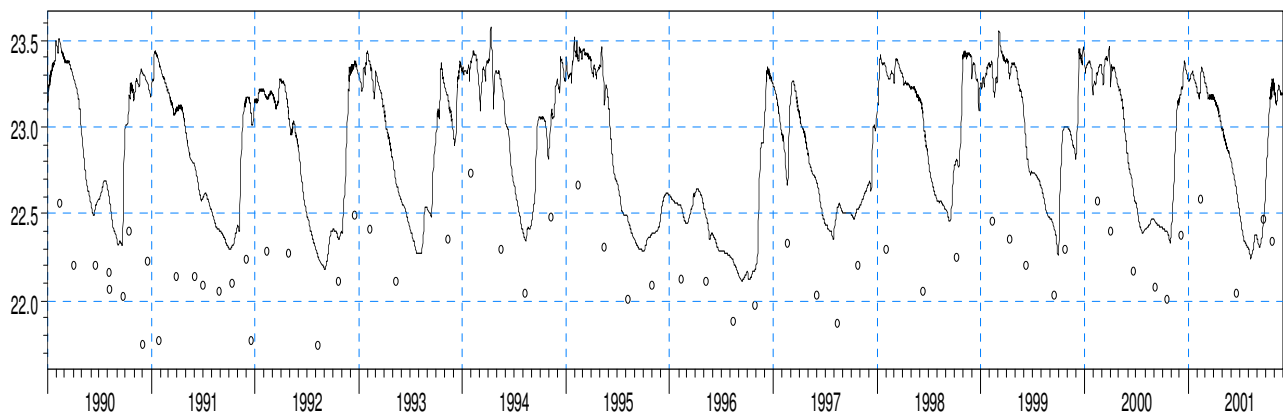
159\_905 [m] ○ ○  
159\_905 [m] —



ME=-0.340432  
MAE=0.358923  
RMSE=0.4408  
STDres=0.280019  
R(Correlation)=0.852305  
R2(Nash\_Sutcliffe)=-0.572055

### 159. 902, head elevation in saturated zone

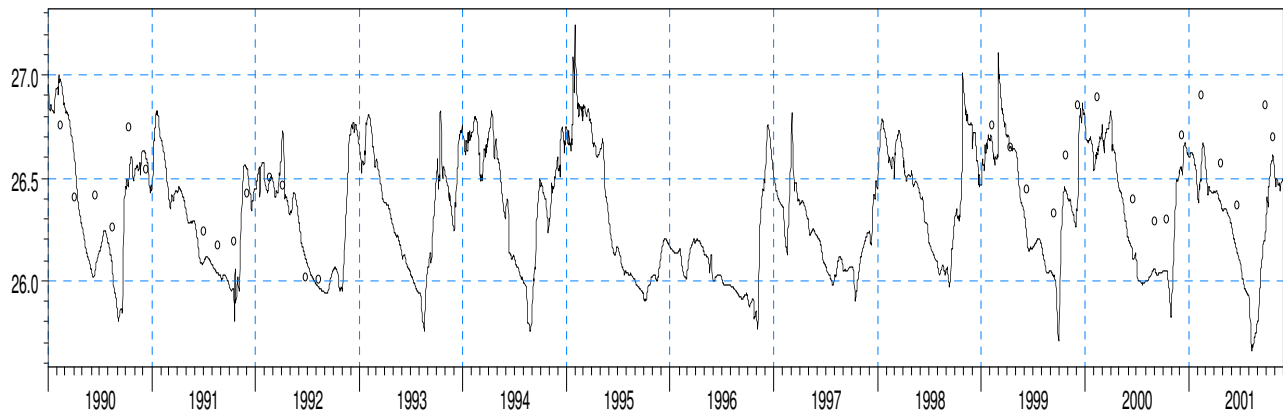
159\_902 [m] ○ ○  
159\_902 [m] —



ME=-0.624332  
MAE=0.624445  
RMSE=0.677345  
STDres=0.262688  
R(Correlation)=0.799164  
R2(Nash\_Sutcliffe)=-9.53251

### 159. 912, head elevation in saturated zone

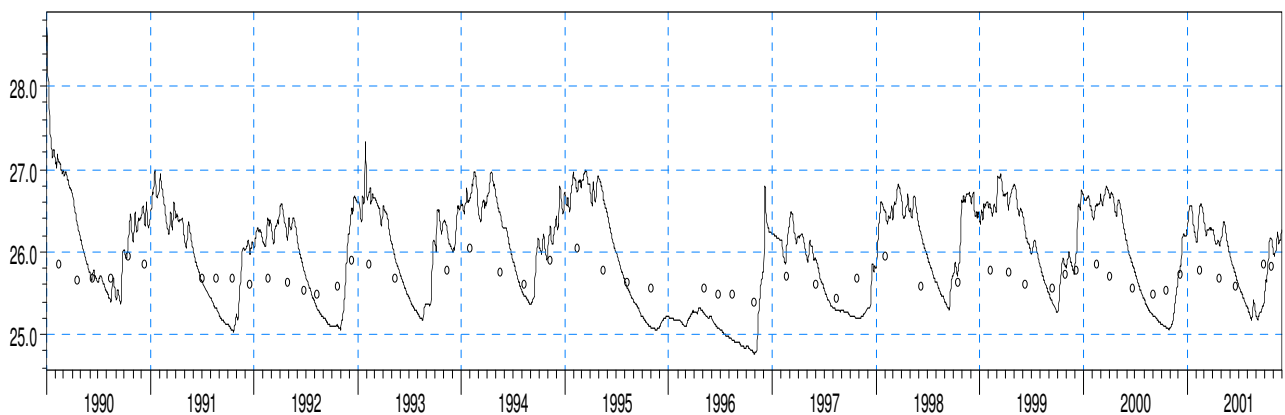
159\_912 [m] ○ ○  
159.912 [m] —



ME=0.152712  
MAE=0.214869  
RMSE=0.256579  
STDres=0.206184  
R(Correlation)=0.69137  
R2(Nash\_Sutcliffe)=-0.0636855

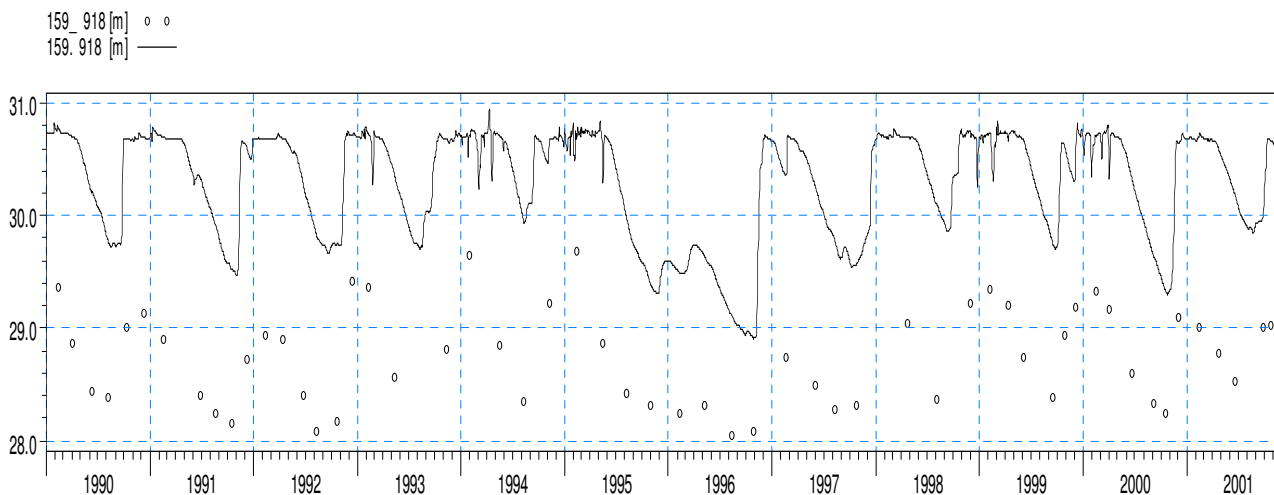
### 159. 909, head elevation in saturated zone

159\_909 [m] ○ ○  
159.909 [m] —



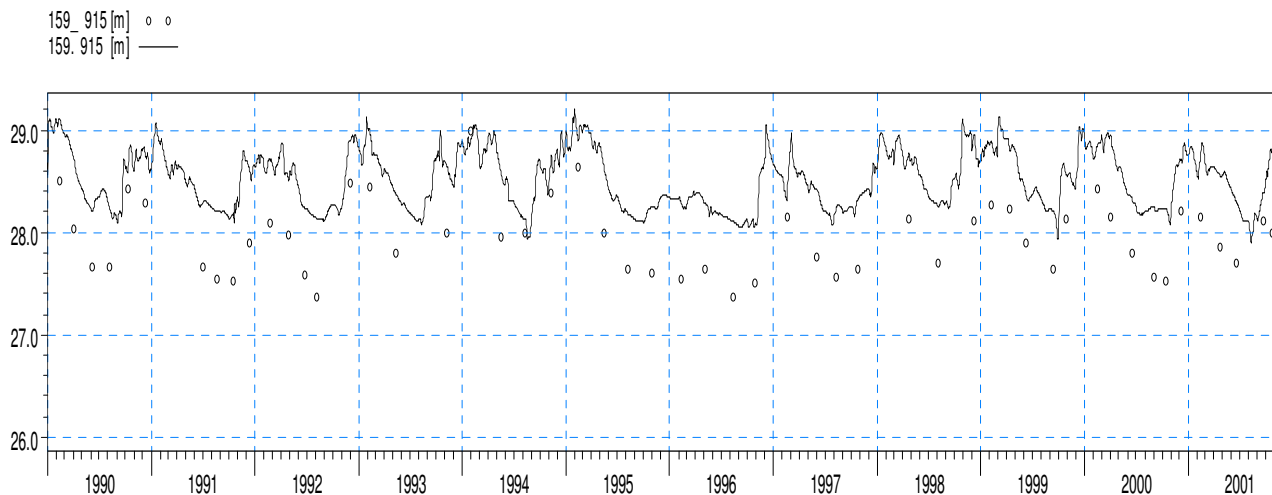
ME=-0.205084  
MAE=0.445126  
RMSE=0.516713  
STDres=0.474272  
R(Correlation)=0.720698  
R2(Nash\_Sutcliffe)=-11.5706

### 159. 915, head elevation in saturated zone



ME=-1.525  
MAE=1.525  
RMSE=1.54924  
STDres=0.273002  
R(Correlation)=0.834345  
R2(Nash\_Sutcliffe)=-12.0059

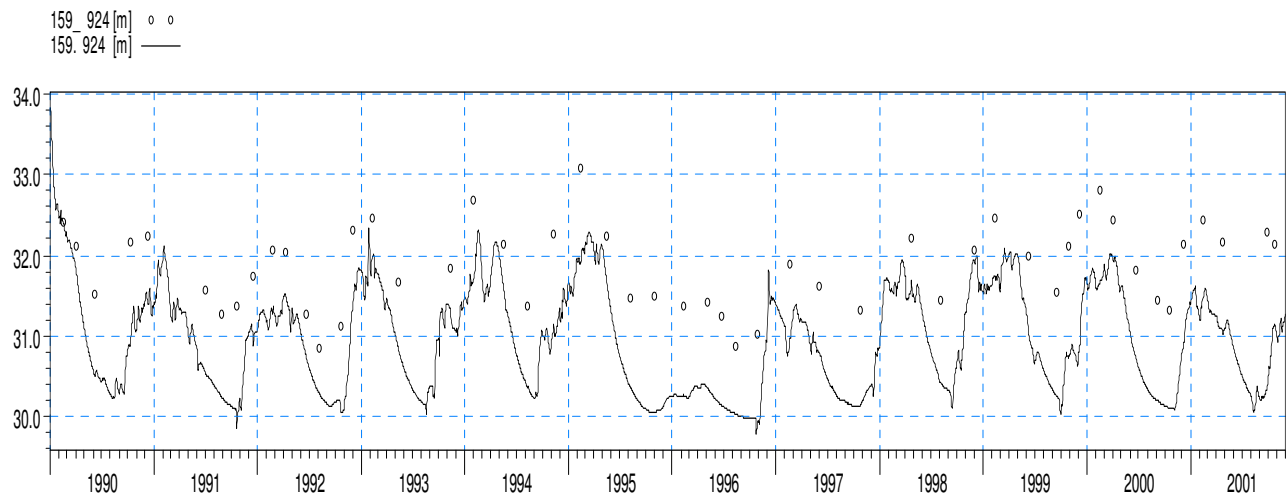
### 159. 918, head elevation in saturated zone



ME=-0.561433  
MAE=0.564746  
RMSE=0.589217  
STDres=0.1788  
R(Correlation)=0.86608  
R2(Nash\_Sutcliffe)=-1.76622

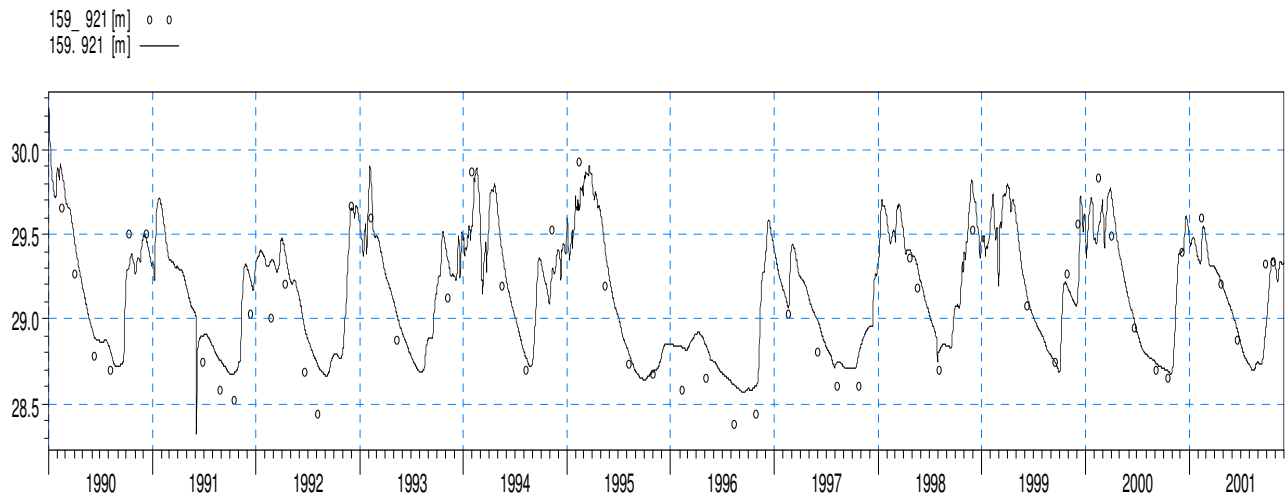


### 159. 924, head elevation in saturated zone



ME=0.944731  
MAE=0.945288  
RMSE=1.01197  
STDres=0.362709  
R(Correlation)=0.835557  
R2(Nash\_Sutcliffe)=-2.88905

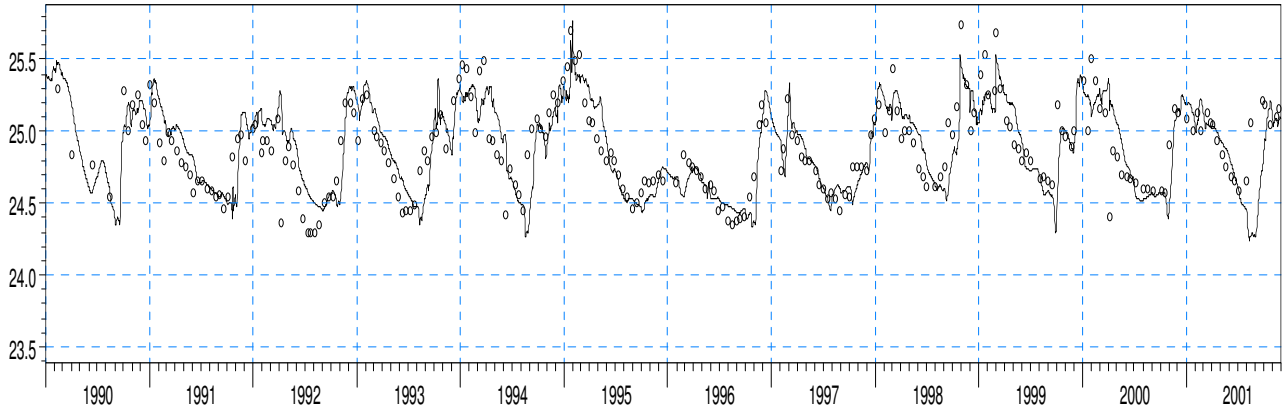
### 159. 921, head elevation in saturated zone



ME=-0.0690862  
MAE=0.162443  
RMSE=0.193131  
STDres=0.180352  
R(Correlation)=0.903211  
R2(Nash\_Sutcliffe)=0.784462

### 159. 930, head elevation in saturated zone

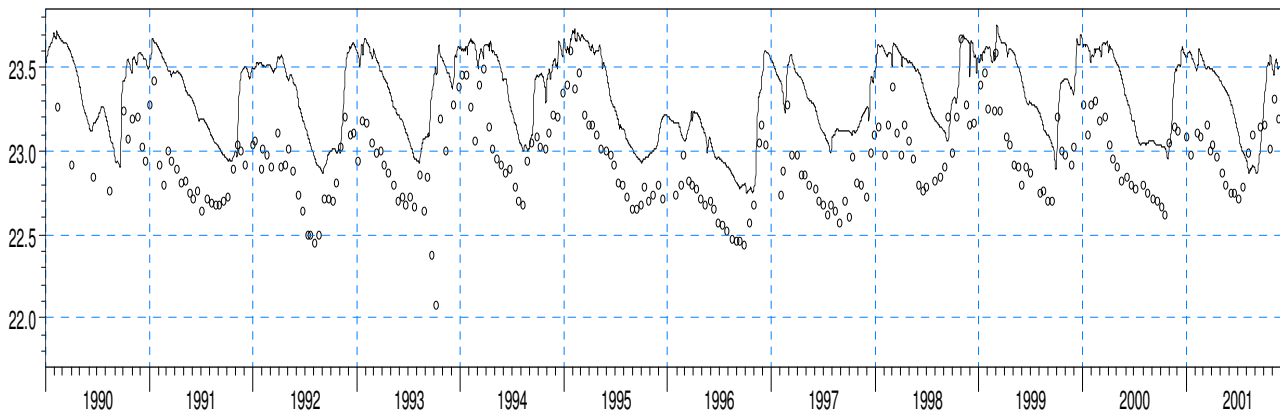
159\_930 [m] ○ ○  
159\_930 [m] —



ME=-0.0065239  
MAE=0.148321  
RMSE=0.206279  
STDres=0.206176  
R(Correlation)=0.773112  
R2(Nash\_Sutcliffe)=0.562873

### 159. 925, head elevation in saturated zone

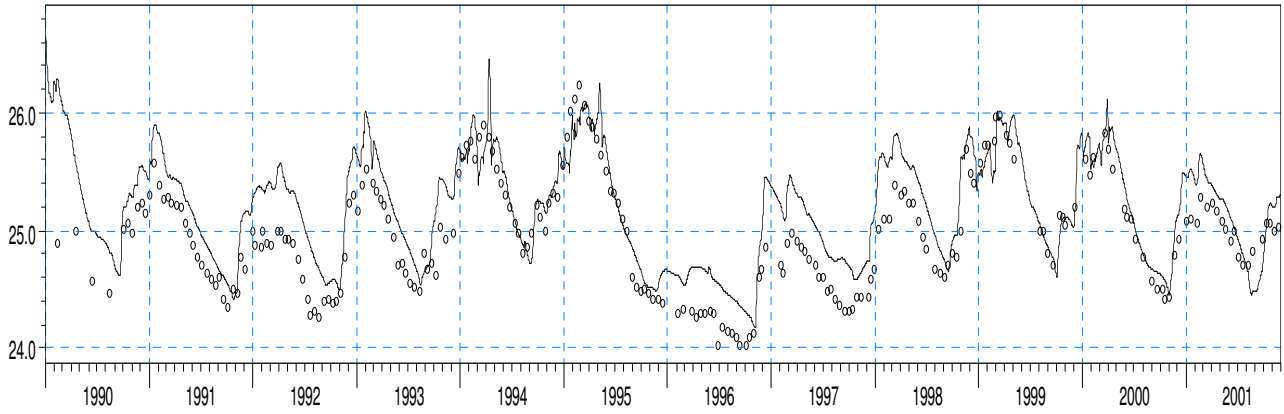
159\_925 [m] ○ ○  
159\_925 [m] —



ME=-0.39206  
MAE=0.397256  
RMSE=0.434816  
STDres=0.188026  
R(Correlation)=0.722947  
R2(Nash\_Sutcliffe)=-1.91417

### 159. 940, head elevation in saturated zone

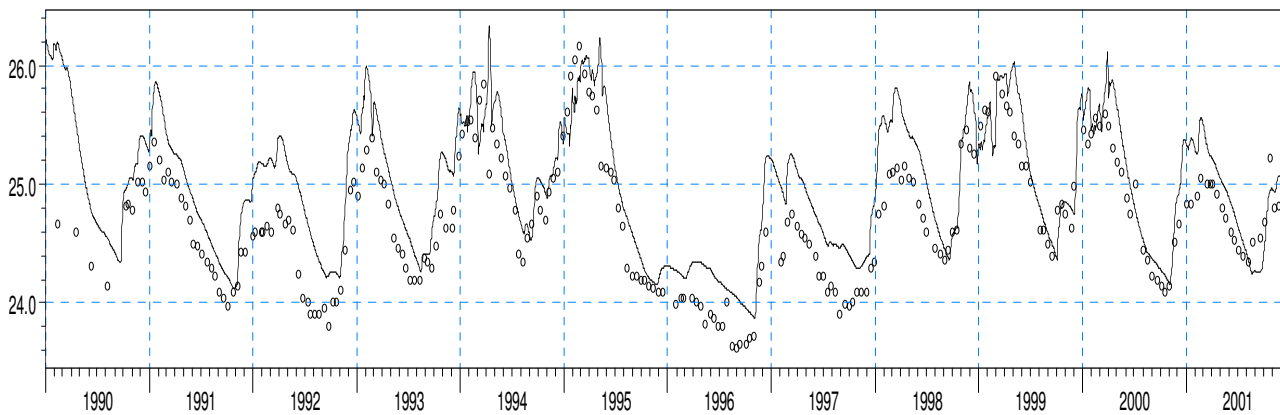
159\_940 [m] ○ ○  
159\_940 [m] —



ME=-0.206432  
MAE=0.249738  
RMSE=0.295325  
STDres=0.211194  
R(Correlation)=0.904194  
R2(Nash\_Sutcliffe)=0.643198

### 159. 935, head elevation in saturated zone

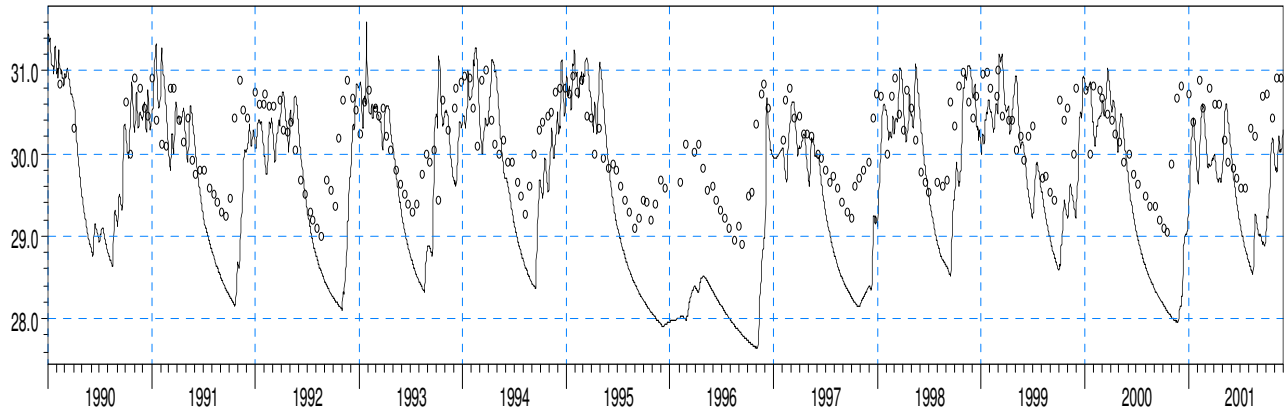
159\_935 [m] ○ ○  
159\_935 [m] —



ME=-0.27193  
MAE=0.308253  
RMSE=0.362088  
STDres=0.239086  
R(Correlation)=0.904676  
R2(Nash\_Sutcliffe)=0.571169

### 159. 950, head elevation in saturated zone

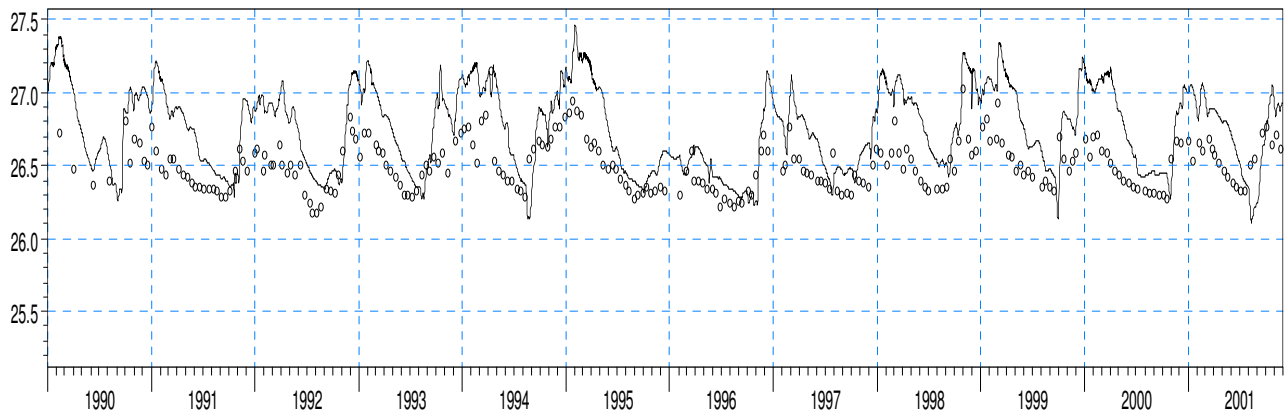
159\_950 [m] ○ ○  
159\_950 [m] —



ME=0.561607  
MAE=0.745433  
RMSE=0.941412  
STDres=0.755549  
R(Correlation)=0.644152  
R2(Nash\_Sutcliffe)=-1.7929

### 159. 945, head elevation in saturated zone

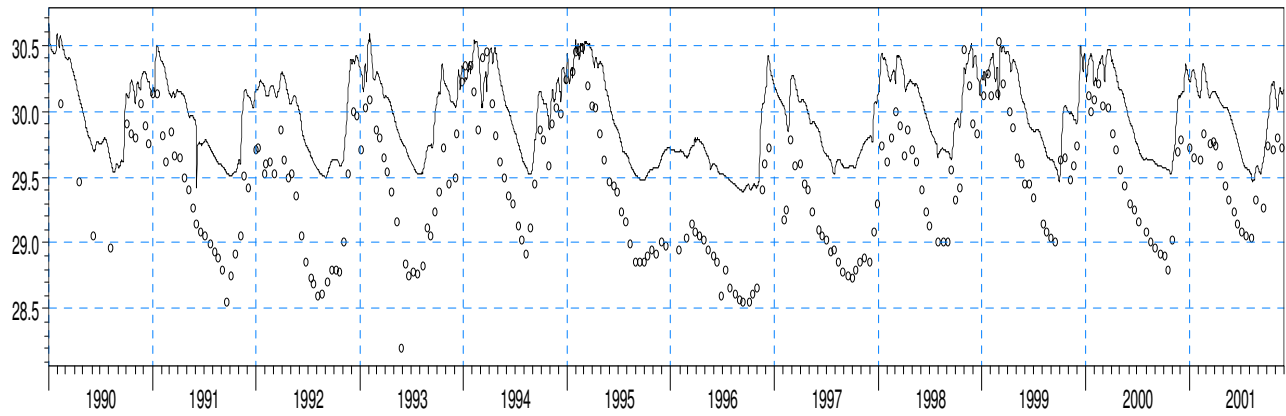
159\_945 [m] ○ ○  
159\_945 [m] —



ME=-0.24732  
MAE=0.271902  
RMSE=0.321734  
STDres=0.205781  
R(Correlation)=0.689273  
R2(Nash\_Sutcliffe)=-1.98849

### 159. 960, head elevation in saturated zone

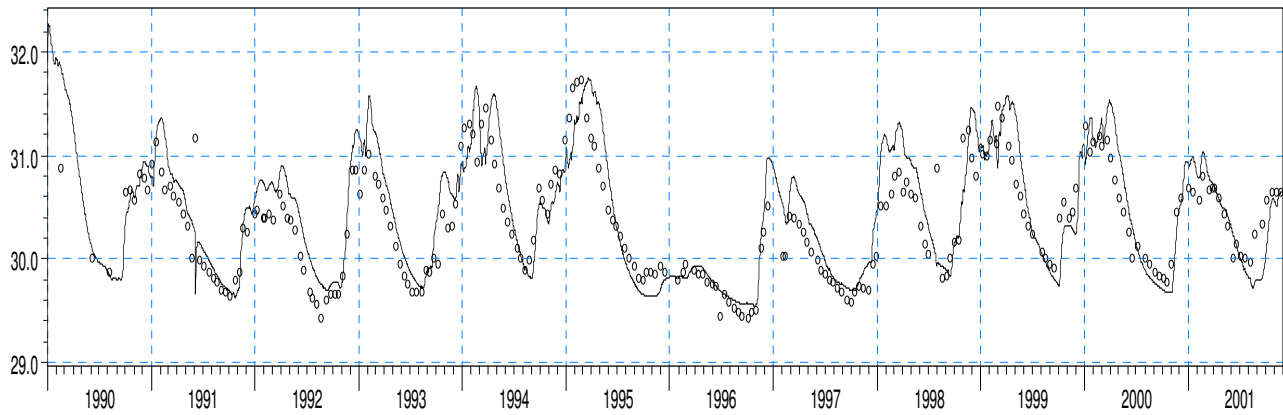
159\_960 [m] ○ ○  
159\_960 [m] —



ME=-0.54084  
MAE=0.549997  
RMSE=0.596655  
STDres=0.25197  
R(Correlation)=0.905438  
R2(Nash\_Sutcliffe)=-0.435874

### 159. 955, head elevation in saturated zone

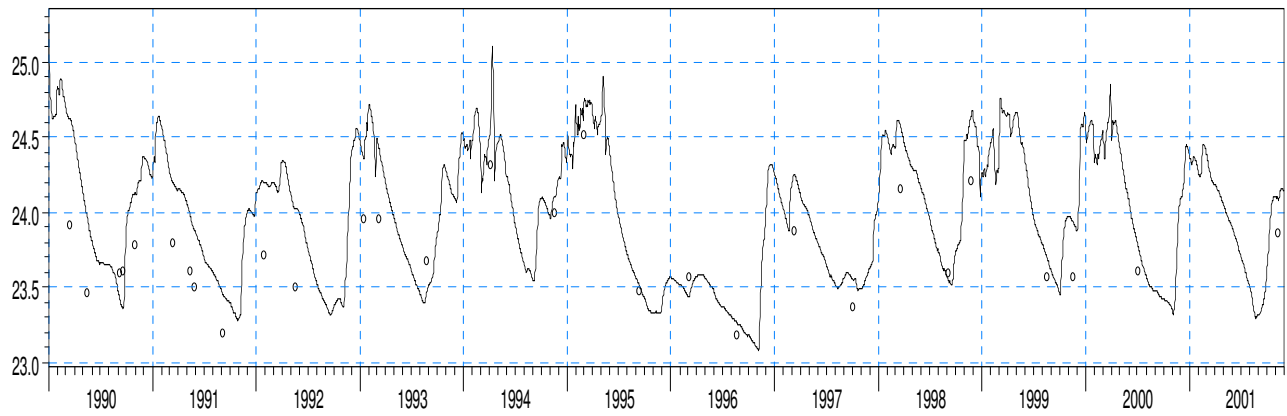
159\_955 [m] ○ ○  
159\_955 [m] —



ME=-0.105137  
MAE=0.228446  
RMSE=0.300899  
STDres=0.281933  
R(Correlation)=0.876001  
R2(Nash\_Sutcliffe)=0.67624

### 159. 979, head elevation in saturated zone

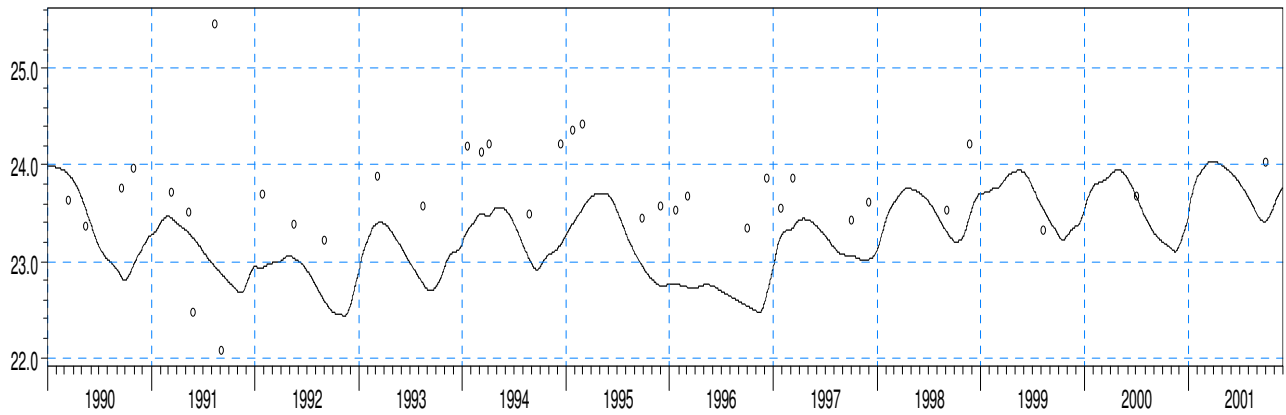
159\_979 [m] ○ ○  
159\_979 [m] —



ME=-0.227133  
MAE=0.277952  
RMSE=0.317925  
STDres=0.222456  
R(Correlation)=0.871294  
R2(Nash\_Sutcliffe)=0.0458245

### 159. 978, head elevation in saturated zone

159\_978 [m] ○ ○  
159\_978 [m] —



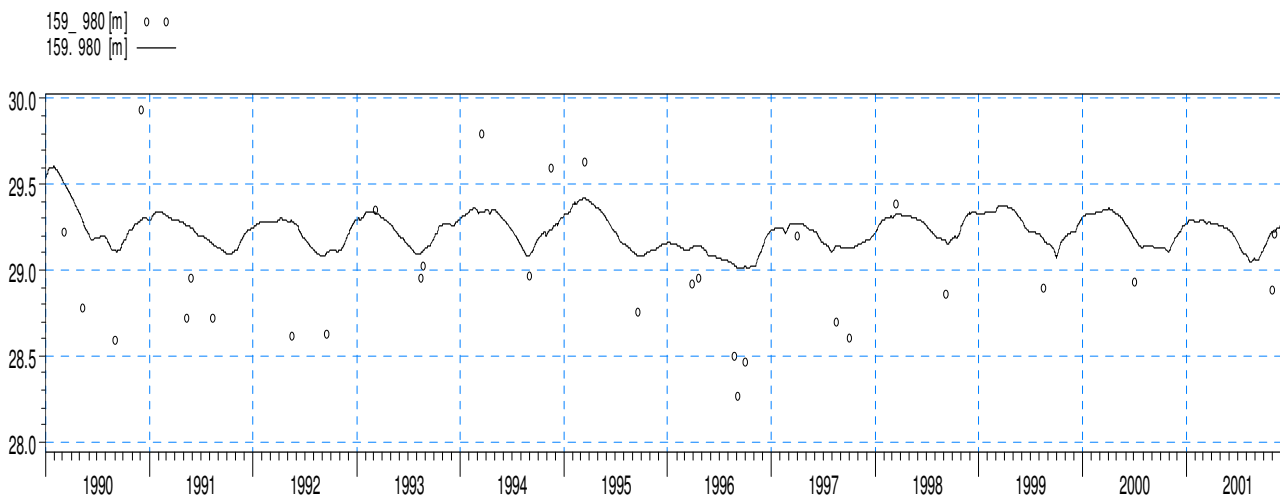
ME=0.573213  
MAE=0.661099  
RMSE=0.778182  
STDres=0.526303  
R(Correlation)=0.226095  
R2(Nash\_Sutcliffe)=-1.48399

### 159. 981, head elevation in saturated zone



ME=-0.400394  
MAE=0.481122  
RMSE=0.509232  
STDres=0.314646  
R(Correlation)=0.587281  
R2(Nash\_Sutcliffe)=-1.14946

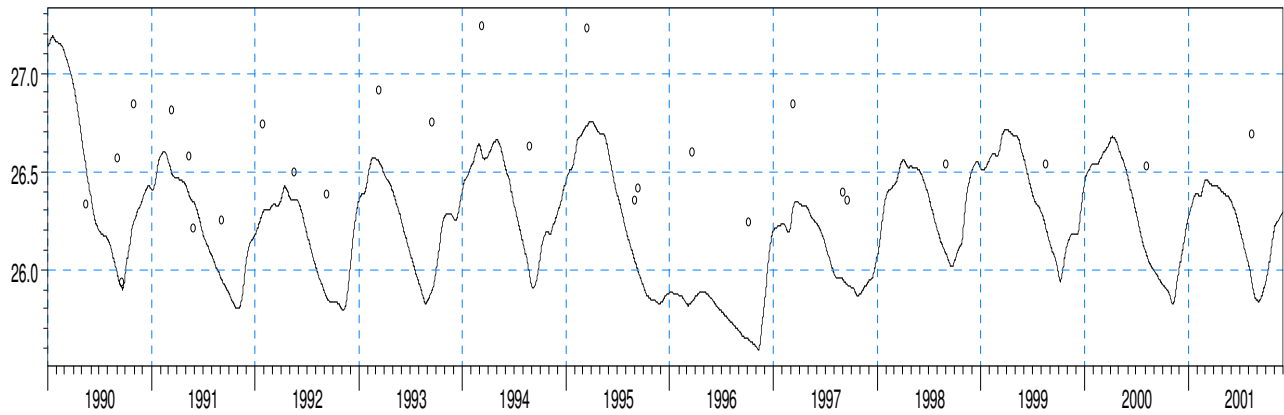
### 159. 980, head elevation in saturated zone



ME=-0.205926  
MAE=0.334771  
RMSE=0.385042  
STDres=0.325348  
R(Correlation)=0.75325  
R2(Nash\_Sutcliffe)=0.0658633

### 159. 983, head elevation in saturated zone

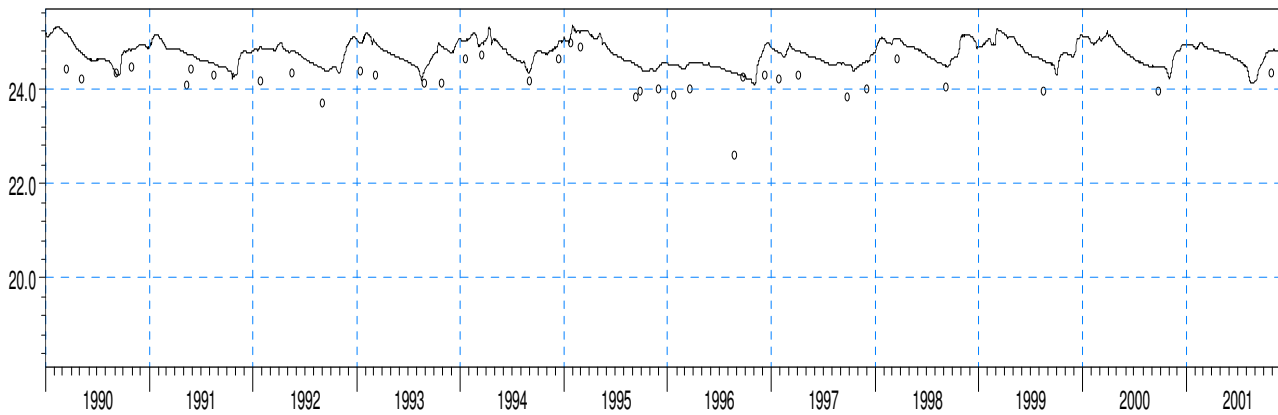
159\_983 [m] ○ ○  
159\_983 [m] —



ME=0.442917  
MAE=0.458435  
RMSE=0.491698  
STDres=0.21352  
R(Correlation)=0.736362  
R2(Nash\_Sutcliffe)=-1.68231

### 159. 982, head elevation in saturated zone

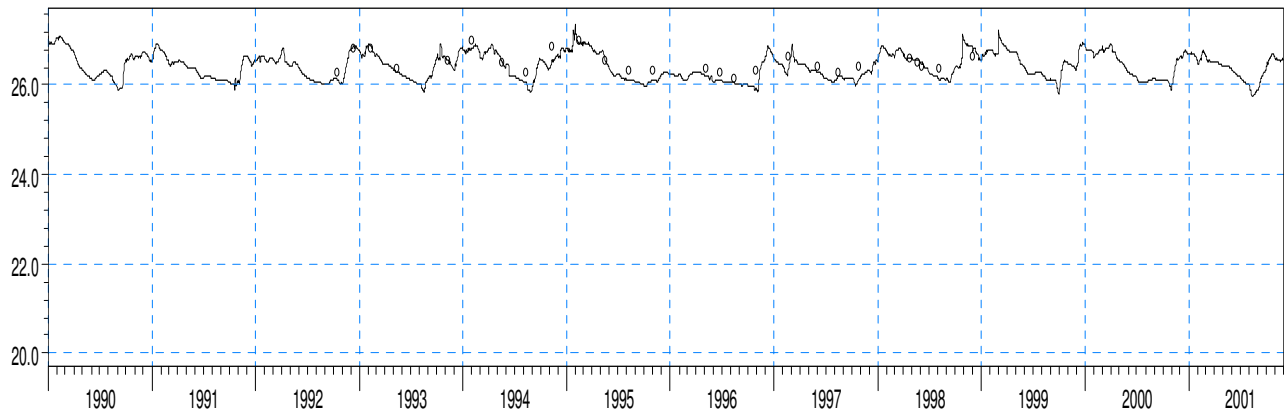
159\_982 [m] ○ ○  
159\_982 [m] —



ME=-0.305039  
MAE=0.348705  
RMSE=0.439114  
STDres=0.315867  
R(Correlation)=0.650312  
R2(Nash\_Sutcliffe)=-0.116616



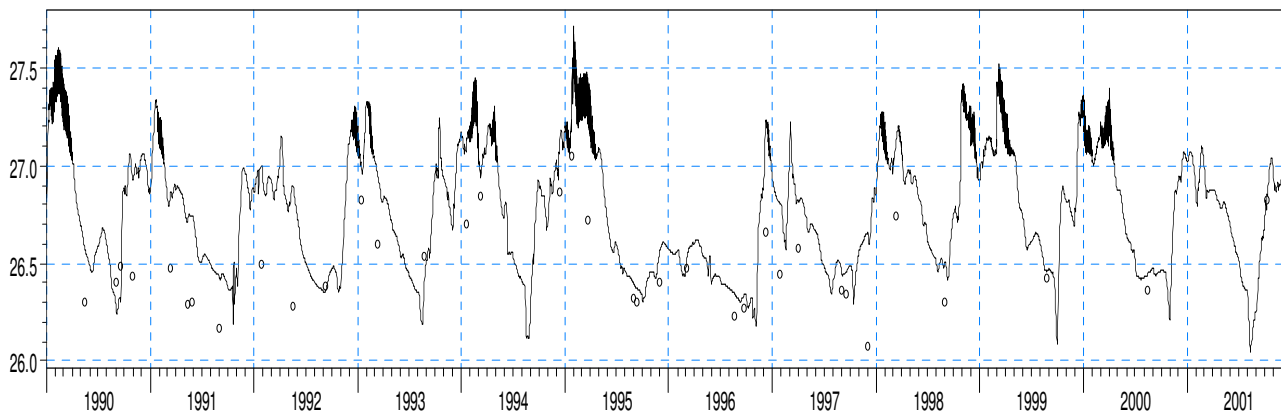
159\_1053 [m] ○ ○  
159.1053 [m] —



ME=0.125571  
MAE=0.15997  
RMSE=0.200608  
STDres=0.156446  
R(Correlation)=0.850516  
R2(Nash\_Sutcliffe)=0.231693

### 159. 984, head elevation in saturated zone

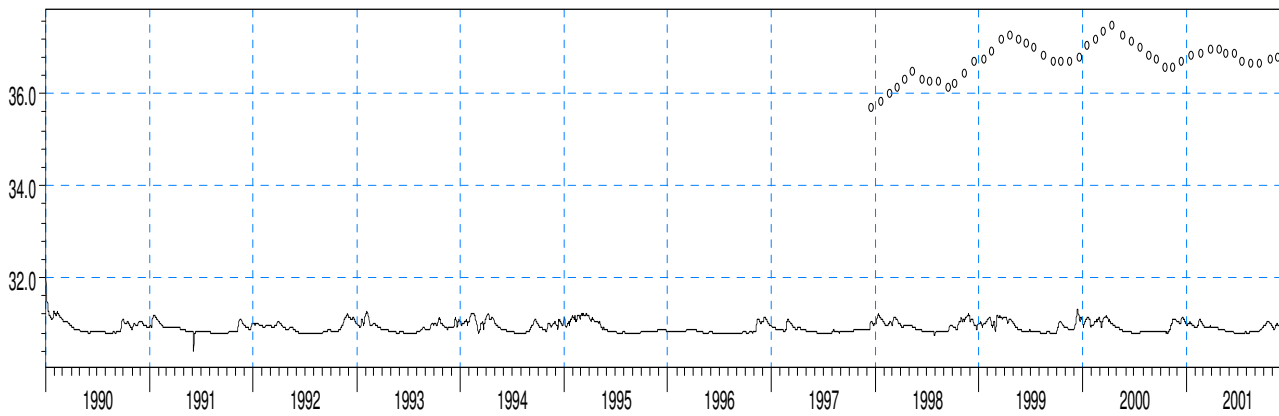
159\_984 [m] ○ ○  
159.984 [m] —



ME=-0.231279  
MAE=0.246468  
RMSE=0.310851  
STDres=0.207697  
R(Correlation)=0.724927  
R2(Nash\_Sutcliffe)=-1.01326

### 159. 1153, head elevation in saturated zone

159\_1153 [m] ○ ○  
159.1153 [m] —



ME=5.80019  
MAE=5.80019  
RMSE=5.81442  
STDres=0.406555  
R(Correlation)=-0.0177298  
R2(Nash\_Sutcliffe)=-222.73