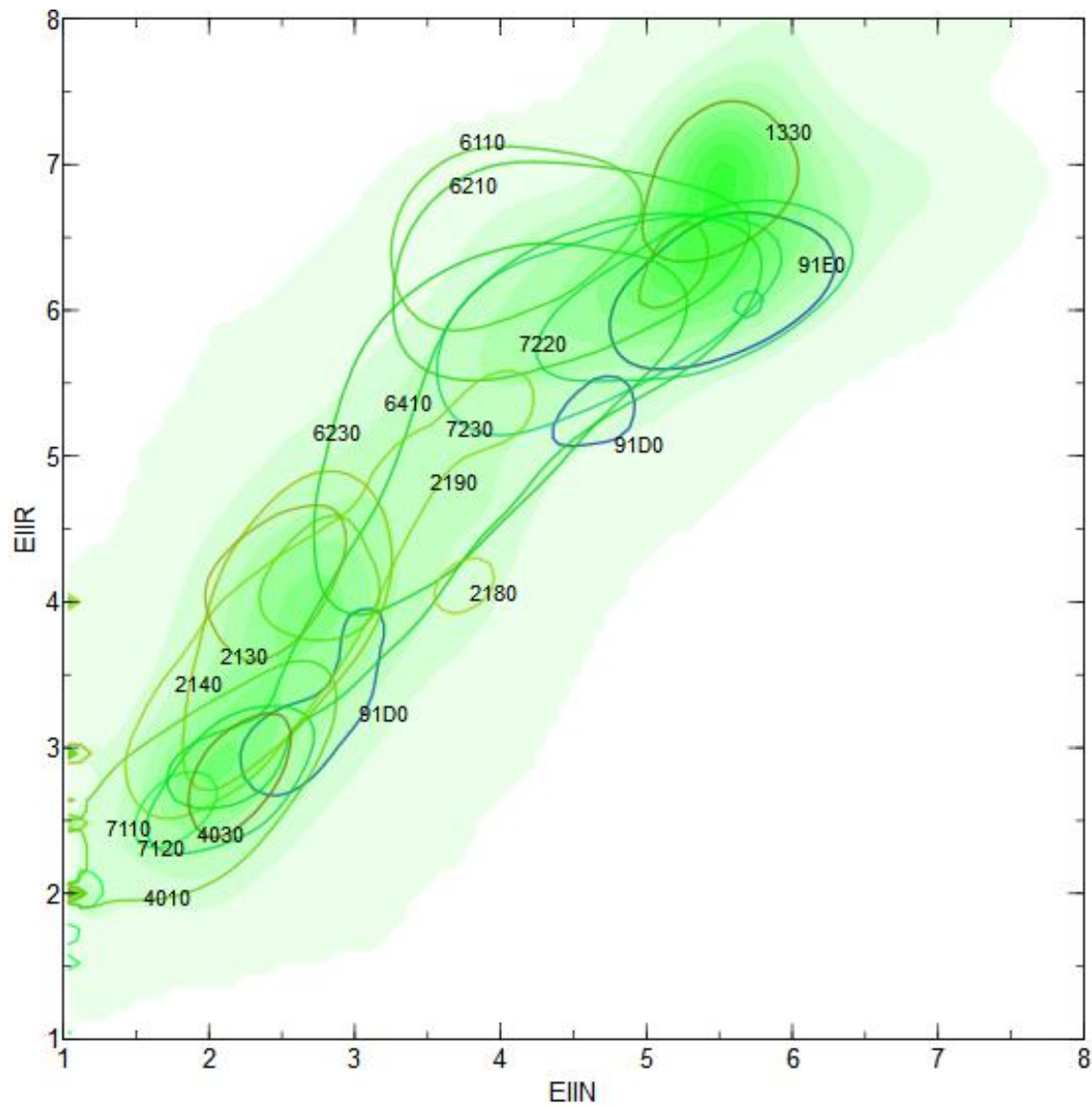


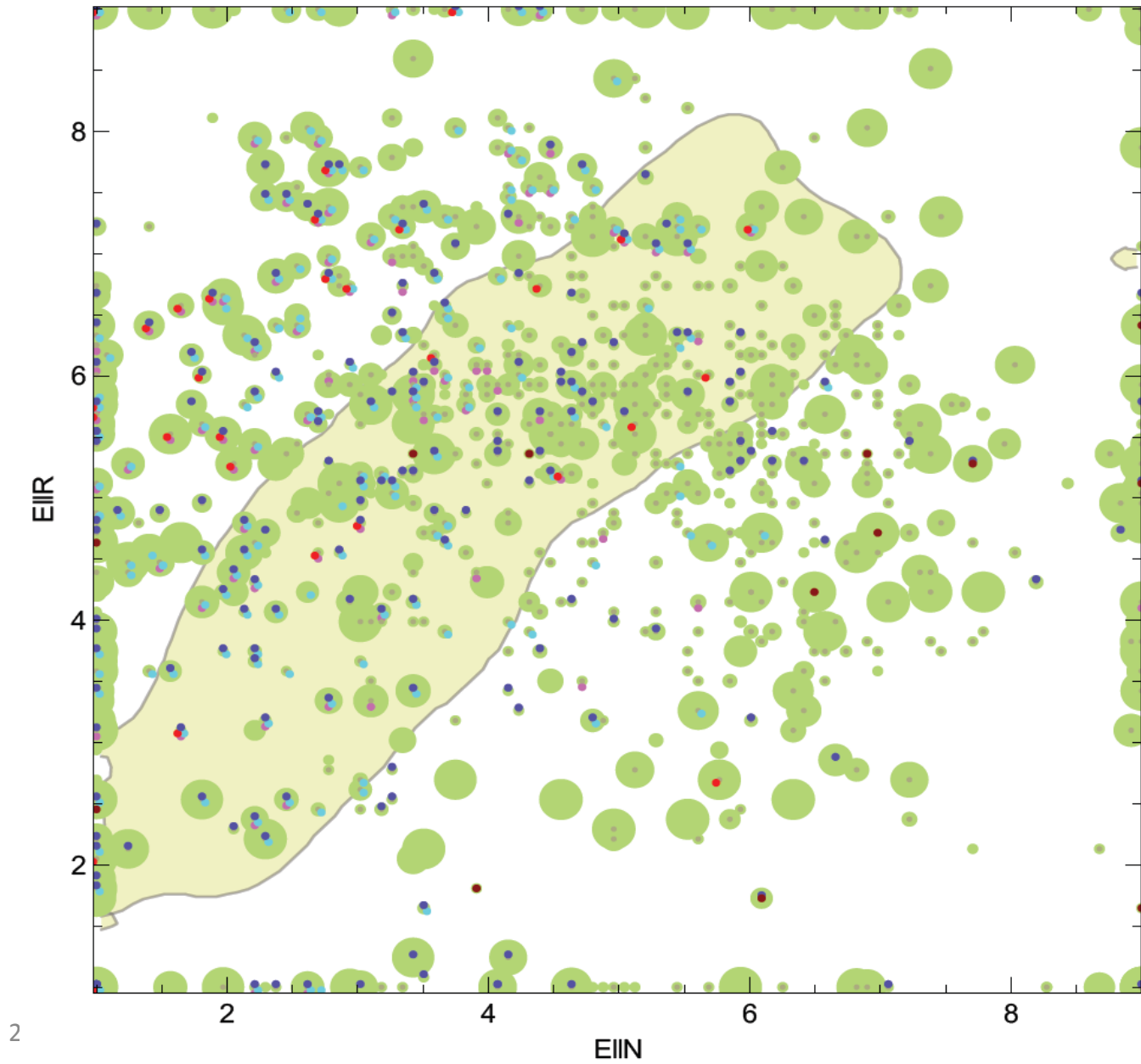
Biodiversity-related critical loads in a Danish and European context

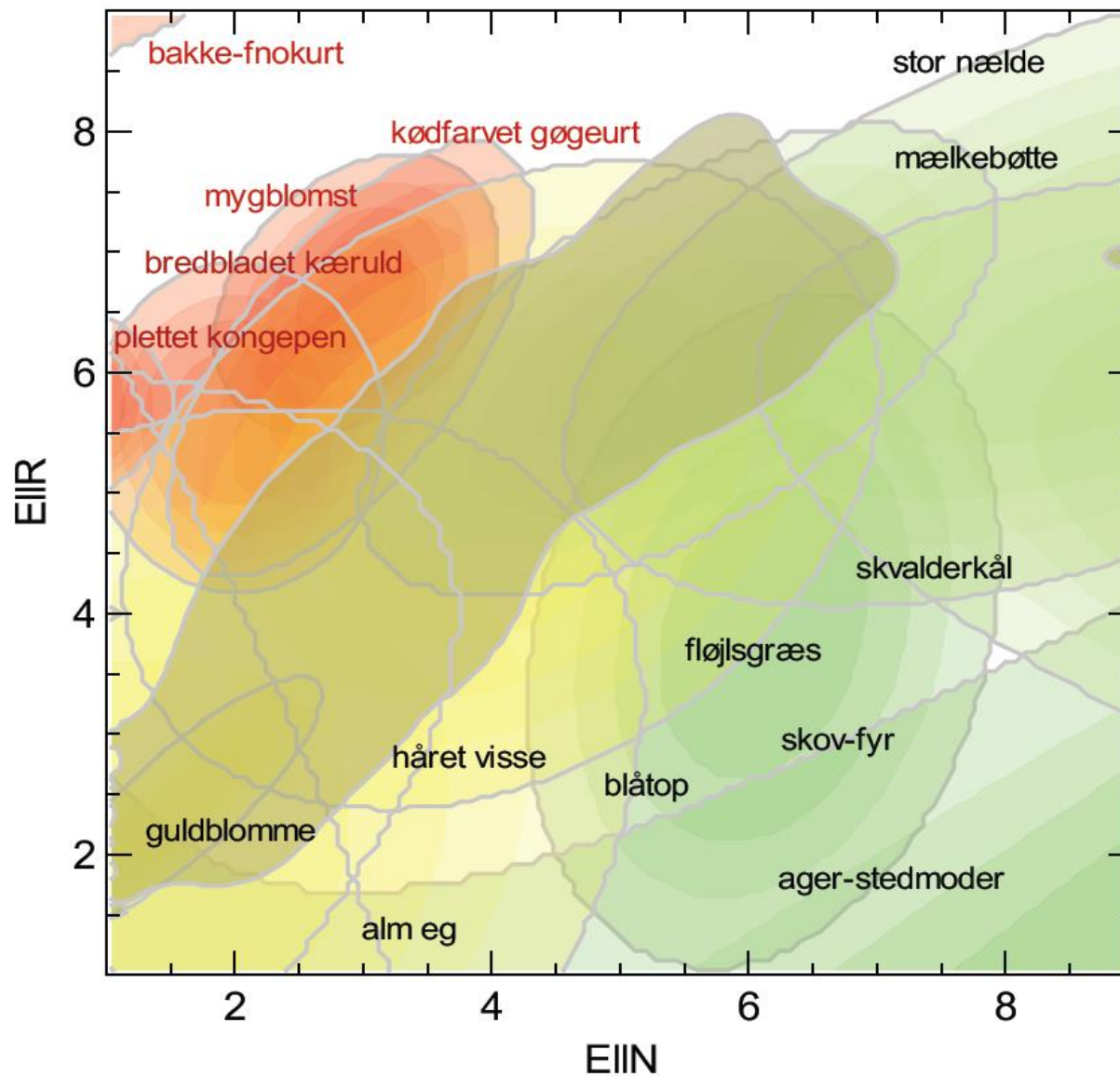
Jesper Bak, Danish NFC, Aarhus University

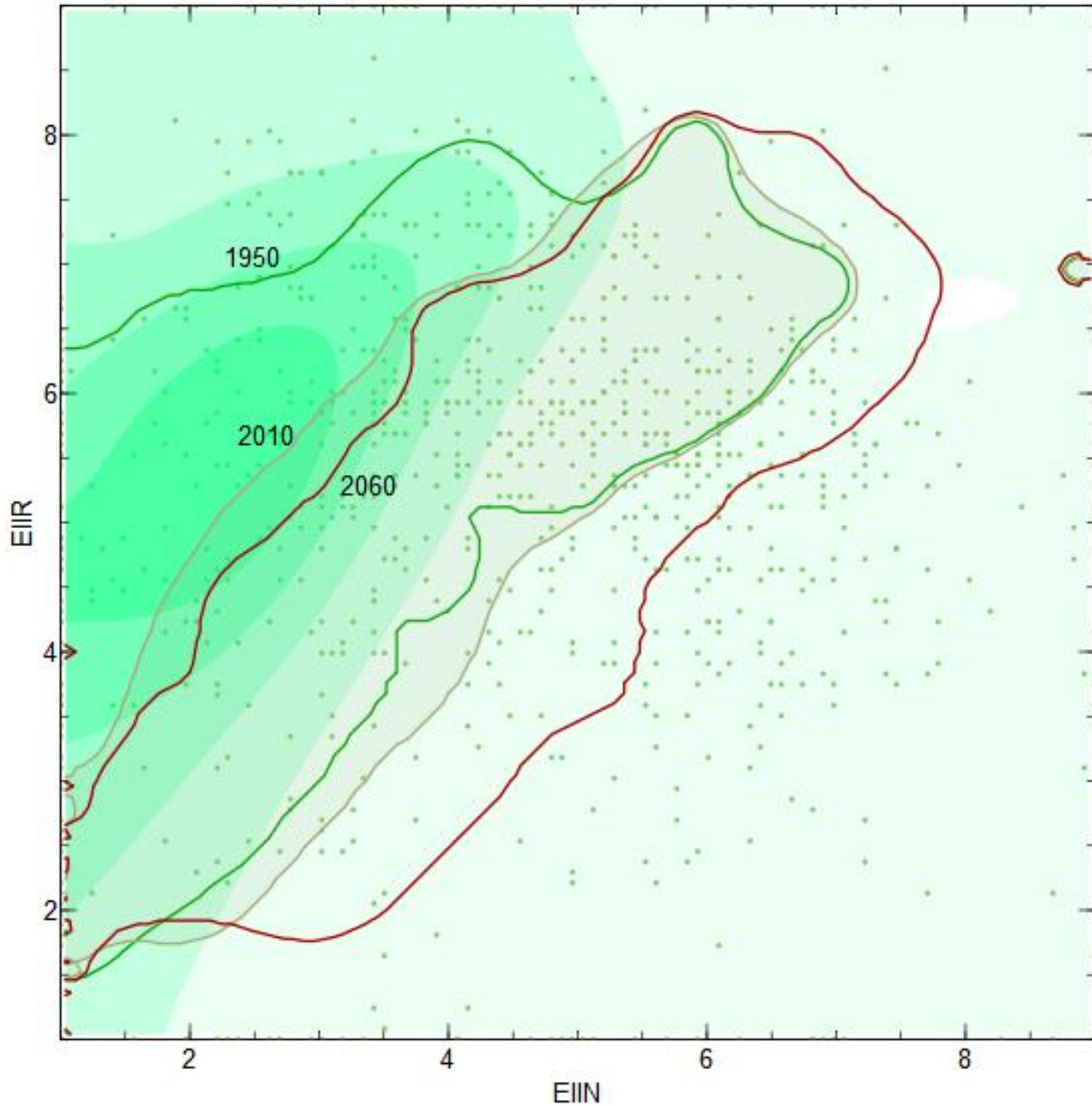
Distribution of nature types



Habitats and species







Methods for the assessment of air pollution effects on biodiversity

Can be established

- Scenario analysis, critical loads and target loads
- European, country and local scale
- Biodiversity endpoint (stop for loss)
- Reference / goal / target

Calculated values same order of magnitude as low end of empirical CL's, still problems, continued loss

Large number of affected species, red list, Annex 1

Time delays